



Bulletin Editor: Andy Hung ♦ Co-Editors: Barry Rigal, Brent Manley
 Contributions to andygccbulletin@gmail.com or 0425-101-094

FEATHERS TO FAUNA

Today is Dress Up Theme Day, the GCC Annual event that spices up the tournament! This year's theme is "Feathers to Fauna", and the photography will be taken during the breaks of the morning's teams matches, and will continue on during the lunch break.

Here were the winners from the previous two years:



2019's "Sand to Sea" winners:
The Sands of Redcliffe



2018's "Australiana" winners:
The Little Nippers from TeAroha

Current leaders in the Teams Championships:

Open: Krochmalik (17), Bach (1), Ashton (2)

Intermediate: Moffit (2), Koster (51), Van Weeren (31)

Restricted: Gillies (30), Henke (35), Harrah (24)

Novice: Young (10), Sheldrake (14), Speller (8)

**No Celebrity Speaker on Today
It's the Feathers and Fauna Day!**

TODAY'S SCHEDULE

Wednesday 26th Feb

| | |
|---------|---|
| 10:30am | Teams (O, I, Re, N) Rounds 5-6/12 Pairs 0-50MP Session 1 of 2 Walk-In Pairs |
| 3:00pm | Teams (O, I, Re, N) Rounds 7-8/12 Pairs 0-50MP Session 2 of 2 Walk-In Pairs |

O=Open, I=Intermediate, Re=Restricted, N=Novice

CATEGORY PRIZES for the Pairs Championship

Open Best Women's: Marilyn Chadwick – Toni Sharp

Best Queensland

Open: Hugh McAlister – Diana McAlister

Intermediate: Chris Larter – John Lahey

Restricted: Elaine Crommelin - Barbara White

Novice: Lesley Sutherland - Lindell Day

Prizes can be collected at the office!



Winners of the 0-50 Tuesday Pairs (N/S):
Philip Argyris and Bob Swann



Winners of the 0-50 Tuesday Pairs (E/W):
Jenny Burchmore & Barb Richardson

Thanking the 2020 GCC Staff

Our World Class run event could not be possible without these fantastic people (Anne Russell too as the photographer)! Although they may not be able to help locate that vital missing queen of spades for you, but they can certainly listen to how your partner bid 5♥ over the opponent's 4♠ when you were about to double the opponents with ♠AKQx! Just kidding of course – the staff are there to help make your experience a great and a memorable one here at the GCC.



OPEN TEAMS QUALIFYING MATCH ONE

Barry Rigal

The very first deal of the event set the field a really difficult problem.

Dealer: North
Vul: None
Brd 1

♠ K J 8 7 3
♥ 9
♦ K Q 9 6 5
♣ K Q

♠ A 10 9 5 4
♥ 8 7 3
♦ 7 3
♣ 9 7 6

♠ 2
♥ K J 6 5 4
♦ 4 2
♣ A 10 8 5 3

♠ Q 6
♥ A Q 10 2
♦ A J 10 8
♣ J 4 2

West North East South

| Makeable Contracts | | | | |
|--------------------|---|---|---|----|
| 3 | - | 4 | - | NT |
| 3 | - | 3 | - | ♠ |
| - | 1 | - | - | ♥ |
| 4 | - | 4 | - | ♦ |
| - | - | 1 | - | ♣ |

Those who could open the East hand a weak or even a 14-16 no-trump stood a decent shot of reaching 3NT when South showed hearts and a minor.

West can jump to 3♠ to show a forcing (or invitational plus hand if playing Transfer Lebensohl) and East should settle for 3NT. Yes, the club stopper is a trifle etiolated; and partner might have a singleton club on a really bad day. But you are as unsuitable for spades as you can be and you do have the hearts as well stopped as possible.

More than half the field got it right; but if East opens 1♦ and South bids 2NT to show hearts and clubs, how does West get their suitability for diamonds across while showing the spades? It is not that 5♦ is so terrible – it goes down because the spades (where you are missing six cards) as opposed to the trumps (where you are missing four) don't break. Unlucky! One possible auction is for West to bid 3♥ over 2NT to show spades and a forcing hand. Then he can pass 3NT reasonably happily --- until he finds partner with three small clubs not jack-third. We happened to be in the right place at the right time to defend 4♠x by West, and after a heart lead declarer allowed herself to be forced and lost 500.

A few deals later our teammates did very well – a lot better than the field as a whole.

Dealer: West
Vul: Both
Brd 4

♠ 8 3
♥ A K 10 6 2
♦ A Q 10 5
♣ 10 2

♠ K Q 9 7 6
♥ 9 7 5 3
♦ 9 8 3
♣ 6

♠ J 10 5 4 2
♥ Q
♦ 6 4
♣ K 8 5 4 3

♠ A
♥ J 8 4
♦ K J 7 2
♣ A Q J 9 7

West North East South

| Makeable Contracts | | | | |
|--------------------|---|---|---|----|
| 5 | - | 5 | - | NT |
| - | 2 | - | 2 | ♠ |
| 6 | - | 6 | - | ♥ |
| 6 | - | 6 | - | ♦ |
| 4 | - | 4 | - | ♣ |

When Robert Grynberg as West showed 5-4 in the red suits Tom Moss took control and after finding the ♥Q missing offered diamonds as trumps. Yes 6♥ is cold and should be made on careful play. But in 6♦ the possible heart losers can be discarded on clubs. Aren't you just a little surprised that a quarter of the field went down – mostly in 6♥ but a few pairs finessed clubs at trick one in diamonds.

Australian National
Championships & Butler –
ANC 2021 **ORANGE, NSW**
10 – 22 July 2021



Deal five shows a point of technique, one worth bearing in mind on competitive auctions:

Dealer: North
Vul: N-S
Brd 5

♠ Q J 3
♥ 4
♦ K 10 8 5
♣ K J 8 7 5

♠ A 9 7 5 4
♥ A K 9 8 5
♦ A 7 3
♣ ---

♠ 6 2
♥ 7 6 2
♦ J 9 6 4
♣ Q 10 9 2

♠ K 10 8
♥ Q J 10 3
♦ Q 2
♣ A 6 4 3

West North East South

| Makeable Contracts | | | | |
|--------------------|---|---|---|----|
| 1 | - | 1 | - | NT |
| - | - | - | - | ♠ |
| - | 2 | - | 2 | ♥ |
| 1 | - | 1 | - | ♦ |
| 3 | - | 3 | - | ♣ |

As West when partner doubles 1♠ you bid 2♣, and hear 2♥ passed back to you. Whatever double is, it isn't this hand; you want to compete in the minors, and by virtue of not having bid anything more than the bare minimum at your first turn you can bid 2NT now and have it be for the minors. If you wanted to play no-trump you wouldn't have bid 2♣ initially. As it is, 2♥ and 3♣ both make here so there are quite a lot of IMPs at stake on such decisions.

Dealer: South
Vul: Both
Brd 7

♠ ---
♥ 9 8 7 4
♦ A 9 7 2
♣ 10 9 7 6 3

♠ A K Q 10 9 8
♥ A J 10 6 3
♦ K 3
♣ ---

♠ J 5 4 3
♥ Q 5 2
♦ J 10 8 6 4
♣ 8

♠ 7 6 2
♥ K
♦ Q 5
♣ A K Q J 5 4 2

West North East South

| Makeable Contracts | | | | |
|--------------------|---|---|---|----|
| - | - | - | - | NT |
| - | 6 | - | 6 | ♠ |
| - | 5 | - | 6 | ♥ |
| - | 2 | - | 2 | ♦ |
| 5 | - | 5 | - | ♣ |

Another hand where there were Gazillions of IMPs swinging away. I know its right to open the North hand 1♠ but with vulnerable opponents I tried 2♣ and now my LHO overcalled 3♣. Fortunately RHO was too worried we could make slam to push us to the six-level, but making the slam is too hard for all but the tallest declarer. In the other room after (2♣)-3♣-(Pass) I wonder whether West might have experimented with a 4♦ fit jump? That spade void argues you want to buy the hand even in 7♣ over 6♠!

The 'slams' kept coming. Cui culpa here for a new partnership on our undiscussed auction"

Dealer: West
Vul: N-S
Brd 12

♠ 8 7 6
♥ K J 10 8 2
♦ 10
♣ 9 7 6 5

♠ K J
♥ Q 6
♦ A K 9
♣ A K 8 4 3 2

♠ A Q 10 9 4 2
♥ 7 4
♦ J 6 5 3
♣ Q

♠ 5 3
♥ A 9 5 3
♦ Q 8 7 4 2
♣ J 10

West North East South
Rigal Lambardi

Pass 1♣ Pass 1♠
Pass 2♦ Pass 2♠
Pass 3♥ Pass 4♦
Pass 4♠ Pass 5♣
Pass 6♣ Pass 6♠
All Pass

| Makeable Contracts | | | | |
|--------------------|---|---|---|----|
| - | 2 | - | 2 | NT |
| - | 5 | - | 5 | ♠ |
| 1 | - | 1 | - | ♥ |
| - | 3 | - | 3 | ♦ |
| - | 4 | - | 4 | ♣ |

I won't open the North hand 2NT; I'll thcream and thcream until I'm sick...Pablo Lambardi's 2♠ call was a one round force and my 3♥ just set up a GF auction. Thereafter the murk set in with my expecting South to have a heart control since I thought I had denied one. What do you think 5♠ over 4♠ should be, though? My view is it asks for heart control --- whether South is worth that I'm not sure. The good news was that both tables reached slam...and neither defence led hearts. Of course after a trump lead you can unblock clubs, cross to a trump, ruff a club high, draw trumps and claim 13 tricks.

OPEN TEAMS QUALIFYING MATCH TWO

Barry Rigal

Here were some interesting hands from Match 2.

Dealer: South ♠ A K Q 4 3 2
 Vul: N-S ♥ K 3
 Brd 15 ♦ J 8
 ♣ A Q 3

♠ J 10
 ♥ Q 8
 ♦ 10 9 7 3
 ♣ K 10 9 7 2

♠ 8 7 5
 ♥ 9 7 4
 ♦ K 5 2
 ♣ 8 6 5 4

♠ 9 6
 ♥ A J 10 6 5 2
 ♦ A Q 6 4
 ♣ J

| West | North | East | South |
|------|-------|----------|-------|
| Pass | 1♠ | 2♥ | Pass |
| Pass | 2♠ | Pass | Pass |
| 3♥ | Pass | Pass | 3♠ |
| Pass | 4♠ | All Pass | |

Makeable Contracts

| West | North | East | South |
|------|-------|------|-------|
| - | 3 | - | - |
| - | 3 | - | 3 |
| 2 | - | 2 | - |
| 3 | - | 3 | - |
| 1 | - | - | - |

NT
 ♠
 ♥
 ♦
 ♣

This is a funny deal. In our match both tables played a spade partscore, making nine or ten tricks with not much at stake. But imagine yourself as North on the auction shown.

You double-cross your partner by raising him to game and win the ♣J lead cheaply in hand. After drawing trumps in two rounds, can you see a chance to make your contract? You need a little help, but a diamond to the king scores. So far so good; now it seems logical to hope that the club lead is a singleton – East might well have led a doubleton trump instead of a doubleton club jack. So without cashing the ♣A you play a second diamond to the jack and ace. It is East's last chance to beat the contract. If he errs by playing the ♦A you pitch your club loser! East is endplayed to give you a ruff and discard or lead a heart into the tenace.

17 pairs brought home their game on the lead of the ♣J. You can also take the second top club after the ♦K scores, but maybe that will encourage East to find the right defence here by exiting with his low diamond on the third round of the suit. In another match, Sophie Ashton was North and opened a strong 1♣. After East overcalled 1♥ passed around back to her (South's pass was a negative showing 0-4 HCP), she made the practical bid of 3NT. This makes sense, given that 4♠ rates to have a few too many losers when partner is marked with a very weak hand.

Dealer: North ♠ 9 7 4
 Vul: E-W ♥ Q J 10 6 4
 Brd 25 ♦ 7 4 3
 ♣ 9 4

♠ ---
 ♥ A K 9
 ♦ K J 9 6
 ♣ A 10 8 6 5 3

♠ Q 10 6 5 3
 ♥ 5 3 2
 ♦ A Q 10
 ♣ J 7

♠ A K J 8 2
 ♥ 8 7
 ♦ 8 5 2
 ♣ K Q 2

| West | North | East | South |
|------|----------|------|-------|
| | Pass | 1♠ | Pass |
| 2♣ | Pass | 3♣ | Pass |
| 3♥ | Pass | 3♠ | Pass |
| 6♣ | All Pass | | |

Makeable Contracts

| West | North | East | South |
|------|-------|------|-------|
| 6 | - | 6 | - |
| 4 | - | 4 | - |
| 2 | - | 2 | - |
| 6 | - | 6 | - |
| 6 | - | 6 | - |

NT
 ♠
 ♥
 ♦
 ♣

A minor technical point here when you have slightly (but only slightly) overreached to get to slam.

When North leads a club against your slam, you can improve on needing the diamond guess, but you must be careful. You need to win the ♣Q to ruff a spade. Then go back to dummy's ♣K and when trumps split 2-2 you can play ♠AK and ruff a spade. If the ♠Q falls in three or four rounds you have your discard. If it doesn't you can make your best guess in diamonds – and today there is no wrong guess.

TABLE COUNT

TO THE END OF PLAY TUESDAY NIGHT 4216

(Last Year 2019: 4167, and in 2018: 4094)

THE NUMBERS GAME

| Pairs | | | | | | Teams | | | |
|-------------|------|---------|---|----------------|-------------|-------|---------|---|------------|
| Year | Open | Seniors | Intermediate, Novice & Restricted | Swiss Pairs | Total | Open | Seniors | Intermediate, Novice & Restricted | Total |
| 2006 | 324 | 98 | 156 | | 578 | 244 | 56 | 86 | 386 |
| 2007 | 297 | 91 | 180 | | 568 | 243 | 45 | 103 | 391 |
| 2008 | 332 | 104 | 162 | | 598 | 274 | 48 | 96 | 418 |
| 2009 | 284 | 106 | 180 | | 570 | 246 | 46 | 96 | 388 |
| 2010 | 314 | 102 | 204 | | 620 | 214 | 44 | 138 | 396 |
| 2011 | 304 | 98 | 292 | | 694 | 240 | 46 | 150 | 436 |
| 2012 | 264 | 94 | 282 | | 640 | 220 | 46 | 138 | 404 |
| 2013 | 194 | 88 | 308 | 242 | 832 | 200 | 52 | 174 | 426 |
| 2014 | 198 | 70 | 312 | 296 | 876 | 196 | 46 | 184 | 426 |
| 2015 | 198 | 52 | 328 | 320 | 898 | 208 | 36 | 192 | 436 |
| 2016 | 184 | 52 | 350 | 350 | 936 | 206 | 34 | 216 | 456 |
| 2017 | 186 | 48 | 326 | 470 | 1030 | 214 | 40 | 228 | 482 |
| 2018 | 190 | 56 | 352 | 448 | 1046 | 226 | 36 | 202 | 464 |
| 2019 | 201 | 35 | 378 | 406 | 1020 | 212 | 20 | 234 | 466 |
| 2020 | 228 | 0 | 396 | 408 | 1032 | 236 | 0 | 232 | 468 |

New Medallion



For the first time, there is a medal for the best modified datum pair for the Open Teams! In order to win, the pair will have to play all 12 matches. The medals have been provided courtesy of New Zealand Bridge.



The medallions will be presented at the Dinner Dance.

Scoring Errors for the 2020 GCC Teams Championships

Scoring Area Phone Number is 0456587765
Accepts text messages only

The cut-off times for the Teams Championships:

Matches 1, 3, 5, 7, 9

One hour after the end of the next even numbered match

Matches 2, 4, 6, 8, 10

At the start of the next even numbered match

Matches 11, 12

8:30pm Thursday for corrections affecting Final series qualification. Midnight, Thursday, for all other corrections

Talk for Thursday Under 50 Butler Imps

New to Imps?



Jessica Brake (Member of the 2020 Australian Women's team and qualified teacher) will help you understand the differences between Matchpoint and Imp scoring. Learn how IMP scoring should affect your tactics, and how to maximise your results!

Time: 10:10am Thursday

Place: In front of the Under 50 Butler IMP Tables



EASTER BRIDGE CONGRESS IN AUCKLAND

Thought about jetting across to Auckland for Easter??

Friday Afternoon – Butler Swiss Pairs (3A)

Saturday – Pairs (10A) + Restricted Pairs

Sunday – Teams of Four (10A)

Monday – Pairs (5A) and Teams Final

Venue: Auckland Bridge Club, Remuera, Auckland

Dates: 10th to 13th April

Entry through New Zealand Bridge website or

Contact: Sue Brown, +64 27 540 3312 or brownrs@xtra.co.nz for more details



Random bridgies seeking cover from the rain in a beach front shelter turn it into a workout session



TAKING A BAD RESULT IN STRIDE

Brent Manley

In any competitive endeavor, sometimes disaster strikes. The way you respond to the misfortune can determine whether it's a temporary setback or the end of the game.

In Tuesday's Open Teams qualifying first round, a team from New Zealand – Jillian and Peter Ramsey and Mairi and Brian Fitzsimons – suffered a major swing on the seventh board against Margaret Walters and Bronwyn MacLeod, playing for the team captained by Felicity Gunner, but they didn't panic.

Here is what happened:



MacLeod, J. Ramsey, Walters, P. Ramsey

Dealer: South
Vul: Both
Brd 7

♠ ---
♥ 9 8 7 4
♦ A 9 7 2
♣ 10 9 7 6 3

♠ A K Q 10 9 8
♥ A J 10 6 3
♦ K 3
♣ ---

♠ J 5 4 3
♥ Q 5 2
♦ J 10 8 6 4
♣ 8

♠ 7 6 2
♥ K
♦ Q 5
♣ A K Q J 5 4 2

| West | North | East | South |
|---------|---------|----------|-------|
| MacLeod | Jillian | Walters | Peter |
| Pass | 1♣* | 2♣ | Pass |
| Pass | Dbl | 3♣ | Pass |
| 4♣ | 4♣ | Pass | Pass |
| 5♣ | Dbl | All Pass | |

| Makeable Contracts | | | | |
|--------------------|---|---|---|----|
| - | - | - | - | NT |
| - | 6 | - | 6 | ♠ |
| - | 5 | - | 6 | ♥ |
| - | 2 | - | 2 | ♦ |
| 5 | - | 5 | - | ♣ |

1♣ was artificial, indicating at least 16-high-card points. The 2♣ bid by Walters was natural.

The auction told MacLeod it was highly unlikely her side could conjure up enough tricks to defeat the spade game because they were unlikely to take more than a trick or two – most likely none – in clubs.

Peter led the ♠4, ruffed in dummy. Walters led a heart from dummy, Jillian rising with the ace to play another heart, ruffed by Walters with the trump ace. She entered dummy by ruffing a spade and called for a low diamond. When Jillian played the ♦K, Walters claimed for plus 750. It was a 16-IMP gain for Gunner because of what happened at the other table, where North played in 5♠, no doubt pushed there by the opponents. The contract made for plus 650, contributing to the 34-24 win for the Gunner team. The margin would have been larger had Jillian Ramsey not maintained focus to bring home a 1NT contract earlier in the match. This was the deal:

Dealer: East
Vul: N-S
Brd 2

♠ A K
♥ K J 7
♦ 10 9 6 5 2
♣ Q 8 3

♠ 9 2
♥ A 8 6 5
♦ Q 8
♣ K 7 5 4 2

♠ Q 8 7 6 3
♥ Q 9 2
♦ K J 3
♣ A 10

♠ J 10 5 4
♥ 10 4 3
♦ A 7 4
♣ J 9 6

| West | North | East | South |
|---------|---------|----------|-------|
| MacLeod | Jillian | Walters | Peter |
| Pass | 1NT | Pass | 1♠ |
| | | All Pass | |

| Makeable Contracts | | | | |
|--------------------|---|---|---|----|
| - | 1 | - | 1 | NT |
| - | 2 | - | 2 | ♠ |
| - | 2 | - | 2 | ♥ |
| 1 | - | 1 | - | ♦ |
| - | 2 | - | 2 | ♣ |

Walters led the ♥10. Jillian thought things over and played low from dummy. After winning with the ♥A, she played a club to dummy's ace and continued with the ♣10, playing low from hand after West played low. Walters took the ♣J and played a heart to the 9 and West's jack. The ♣Q came back, taken by Jillian with the king. She had noticed that West followed with the ♣8 when she played the ♣10 and, when she covered West's ♣Q with the king, East contributed the 9. Her clubs were now good and she cashed a couple before playing the ♦8 from hand. Walters took the ♦A and switched to a spade, but Jillian was able to claim with seven tricks for plus 90 after MacLeod cashed her two high spades. It was a 1-IMP loss because 1NT at the other table was made with an overtrick for plus 120. Had Jillian gone down in 1NT, it would have cost her team 6 IMPs.

In the second match, there was not a lot of action at the Ramsey table, but when their teammates – the Fitzsimons, returned to the table to compare, they had welcome news regarding board 25. At the Ramsey table, Helen McLauchlan and Pam Horton reached 3NT by McLauchlan. It looks like declarer should have made 12 tricks, but she finished with 11 for plus 660. At the other table, the Fitzsimons were more aggressive facing Judy Valentine and Jessica Mortess.

Dealer: North ♠ 9 7 4
 Vul: E-W ♥ Q J 10 6 4
 Brd 25 ♦ 7 4 3
 ♣ 9 4

♠ ---
 ♥ A K 9
 ♦ K J 9 6
 ♣ A 10 8 6 5 3


♠ A K J 8 2
 ♥ 8 7
 ♦ 8 5 2
 ♣ K Q 2

♠ Q 10 6 5 3
 ♥ 5 3 2
 ♦ A Q 10
 ♣ J 7


| West Brian | North Valentine | East Mairi | South Mortess |
|---------------|--------------------|---------------|------------------|
| | Pass | 1♠ | Pass |
| 2♣ | Pass | 3♣ | Pass |
| 4♣ | Pass | 4NT | Pass |
| 6♣ | All Pass | | |

| Makeable Contracts | | | | |
|--------------------|---|---|---|----|
| 6 | - | 6 | - | NT |
| 4 | - | 4 | - | ♠ |
| 2 | - | 2 | - | ♥ |
| 6 | - | 6 | - | ♦ |
| 6 | - | 6 | - | ♣ |

Brian's 4♣ was asking about key cards in clubs. Mairi's response showed two key cards plus the trump queen. That was all Brian needed to take a shot at the slam. The opening lead was the ♥Q. With the trumps breaking 2-2 and the diamonds lying favourably, Brian was not challenged to take 12 tricks for plus 1370. It was a 12-IMP swing for the Fitzsimons team on the way to an easy victory. After two matches, the team was 1-1 and lying in 85th place out of 236 teams.



Paul Lavings
Bridgegear
 paul@bridgegear.com (02) 4295 0870




COME AND VISIT HELEN AND PAUL AT OUR STALL

LATEST NEW BOOKS


| | |
|---|---------|
| Gaining the Mental Edge by Kim Frazer | \$34.95 |
| Planning the Defense by Seagram/Bird | \$34.95 |
| Insights on Bridge by Mike Lawrence | \$29.95 |
| Defense on the Other Hand by Bird/Cohen | \$33.95 |
| Bridging Two Worlds by Martin Hoffman | \$37.95 |

NEW GIFTWARE

Hand Towels, white and fluffy with suit symbols \$10.00



Pen Sets, enamel four pens with own suit symbol \$20.00



Plus boxer shorts, umbrellas, scarves, socks, visors, shoulder bags, jewellery, mouse pads, slant pads and much more. Complete set of card holders and home bridge supplies.

Paul 0408 888 085 Helen 0418 144 534 Office 02 4295 0870
 EMAIL paul@bridgegear.com WEBSITE www.bridgegear.com

When you land partner in a doomed doubled contract and leave the table to "get some water"



When an opponent makes a mistake



When partner makes a mistake



PHOTOS: DAY FIVE



OPEN TEAMS QUALIFYING MATCH THREE

Barry Rigal

It took them two rounds, but my team aren't stupid. They realised the ideal line-up was to have me sit out as much as possible; so the deals from this match feature me as spectator not player.

Let's see some questions of valuation. Vulnerable against not you pick up:

♠J10964 ♥7632 ♦AK ♣96

Pass on your right, you pass. 1♥ to your left, double from partner, 2♦ to your right. 2♦ is alerted as a transfer raise of hearts, suggesting constructive values. Over to you. It looks natural to bid spades – but how many? In my opinion the right answer is 4♠; with long weak hearts facing known shortage why give partner a chance to stop short of game? As you will see from the full hand the cards do not lie particularly favourably but it is not easy to defeat your game.

Dealer: South
Vul: E-W
Brd 3

♠ J 10 9 6 4
♥ 7 6 3 2
♦ A K
♣ 9 6

♠ K 7 2
♥ K 10 9 8 4
♦ Q J 7
♣ 5 2

♠ 8 5
♥ A Q 5
♦ 6 5 4 3
♣ K 10 4 3

♠ A Q 3
♥ J
♦ 10 9 8 2
♣ A Q J 8 7

West North East South

| Makeable Contracts | | | | |
|--------------------|---|---|---|----|
| 2 | - | 2 | - | NT |
| 3 | - | 3 | - | ♠ |
| - | - | - | - | ♥ |
| 1 | - | 1 | - | ♦ |
| 4 | - | 4 | - | ♣ |

So how should the defence go to 4♠? North rates to lead a heart; how could he know to do otherwise? (For the record, only a diamond lead is fatal to the defence.) South wins and can shift to a trump, ducked round to the queen. When declarer crosses to hand to take a club finesse South wins and reverts to hearts, forcing dummy to ruff and killing the clubs. A heart continuation at trick two works equally well. 4♠ was bid and made only a handful of times – so perhaps my estimate of the worth of the West cards was an overbid,

A few deals later N/S had a delicate choice of games.

Dealer: East
Vul: E-W
Brd 6

♠ J 7 6
♥ 8 7
♦ 10 9 8 7 3
♣ A 7 3

♠ 10 5 3 2
♥ A 3
♦ J 5 2
♣ J 8 6 2

♠ Q 9 8 4
♥ K Q J 10 9 2
♦ A Q
♣ K

♠ A K
♥ 6 5 4
♦ K 6 4
♣ Q 10 9 5 4

West North East South

| Makeable Contracts | | | | |
|--------------------|---|---|---|----|
| - | 2 | - | 2 | NT |
| - | 3 | - | 3 | ♠ |
| - | 3 | - | 3 | ♥ |
| 2 | - | 2 | - | ♦ |
| 1 | - | 1 | - | ♣ |

Should N/S play game or stop in partscore? Surely partscore is enough, with three top losers and two finesses to worry about. But if you do play game, 4♠ is almost hopeless, since repeated club leads rate to doom you even if the diamond finesse succeeds.

In our match, Grynberg-Moss defeated 4♠ by North by repeated club leads to force dummy to ruff twice and promote the ♠J. Pablo Lambardi played 4♥ from South on the ♦10 lead. A spade lead is necessary at double dummy to defeat the game. That allows the defenders to manoeuvre a spade ruff. After the ♦10 lead round to declarer's queen you need a miracle in spades (♠KJ/AJ onside, or ♠AK doubleton in either hand.)

If one defender has ♠AK you want to draw all the trumps before playing spades. If East has doubleton honour-jack you draw two rounds of trump ending in dummy then play spades. As the cards lie that line would fail, but the defenders might slip. An alternative is to lead ♣K from hand at once, to cut the defenders communications for the ruff. That was Lambardi's choice and now after winning the diamond return he drew trumps ending in dummy to play a spade up, and later guessed that suit to make his game.

OPEN TEAMS QUALIFYING MATCH FOUR

Barry Rigal

Warning: the views that follows do not necessarily reflect mainstream thinking.

Dealer: West
Vul: E-W
Brd 16

♠ K J 9
♥ K J 9 8 4 3
♦ A 7
♣ Q 6

♠ 10 7 4
♥ 6 5
♦ 10 6 3
♣ A J 10 8 4

♠ 5
♥ 10 7 2
♦ K Q J 8 4
♣ 9 7 5 2

♠ A Q 8 6 3 2
♥ A Q
♦ 9 5 2
♣ K 3

West North East South

| Makeable Contracts | | | | |
|--------------------|---|---|---|----|
| 6 | - | 6 | - | NT |
| 6 | - | 6 | - | ♠ |
| 6 | - | 6 | - | ♥ |
| - | 1 | - | 1 | ♦ |
| - | 2 | - | 2 | ♣ |

The field did lamentably here, with a data of E/W 770, meaning that less than 20% of the field bid slam here. At some tables N/S got involved in clubs or diamonds, but on an uncontested auction in the top-of-the-table clash where I was watching E/W missed slam after East had produced a strong jump response and had then cue-bid clubs. Clearly West had enough to use Blackwood and bid slam now, but he didn't.

For those of you unlucky or unsound enough not to have strong jumps available how should E/W bid after 1♥-1♠? In my opinion (and I realize I'm not in the majority here) West should raise spades not repeat hearts. After all, three trumps and two ruffing values equate to four trumps...don't they? After 1♠-1♠-2♠-3♣-might West bid 4♥ to get the extra shape across? Even after that start, East would have to risk the five level with a jump to 5♣ to get the slam interest across.

Premature euphoria is a very dangerous emotion at the bridge table. How often have we all received a favourable lead against our contract and failed to follow through on the best line because we were so happy with the earlier play?

Dealer: East
Vul: Both
Brd 26

♠ ---
♥ Q 10 9 7 4
♦ A K Q J 5 4
♣ J 9

♠ Q J 10 9 3 2
♥ 3
♦ 9 7 2
♣ A Q 7

♠ 8 6 5
♥ A K 6 2
♦ 10 6 3
♣ K 6 5

♠ A K 7 4
♥ J 8 5
♦ 8
♣ 10 8 4 3 2

West North East South

| Makeable Contracts | | | | |
|--------------------|---|---|---|----|
| 2 | - | 2 | - | NT |
| - | 2 | - | 2 | ♠ |
| 3 | - | 3 | - | ♥ |
| 1 | - | 1 | - | ♦ |
| 1 | - | 1 | - | ♣ |

At two tables that I know off, and doubtless more across the room, E/W reached the no-play 4♥ with four top losers, and received the friendly spade lead that allowed West to discard two club losers. Where I was watching, declarer next led dummy's ♥J and when it held had no further problems. All South has to do is win the ♥A at the first opportunity and force declarer in clubs. When declarer ruffs he has the choice of playing a second trump, when the hand falls to pieces, or trying a cross ruff. And now...the absence of decent heart intermediates in dummy mean the ♥5 will lose out to the ♥6 at some point. And all because you didn't lead a low trump from dummy at trick three!

If South wins and forces you, simply play three top diamonds and ruff two diamond winners in dummy with good trumps. South cannot overruff or he loses control, so you end up with five plain winners and score five of your six remaining trumps separately. In fact, you could sell me on the idea that you are supposed to play diamonds before even one round of trumps. If North has shown long spades it can hardly lose just to lead diamonds at once. If North ruffs in you can overruff and now your remaining trump spots are good enough to ensure you have 10 tricks



Barrier Reef Congress



**VENUE—St Ursula's College,
Queen Street, Yeppoon**

**Friday 1 May to Monday
4 May, 2020**

**Hosted by
Yeppoon
Bridge Club Inc**

*An ABF Approved Gold
Point Event*

Information and nomination - see websites:-

QBA - [http://www.qldbridge.com.au/brc/yeppoon/
index.php](http://www.qldbridge.com.au/brc/yeppoon/index.php) or

YBC - <http://www.yeppoonbridgeclub.com/BRC.html>

**Queries or assistance - contact the Yeppoon Bridge Club
by Email at brc@yeppoonbridgeclub.com**



DIRECTOR GET TOGETHER

Meet & Greet
Q & A
General Discussion



All Directors
& Players
Welcome

Room 12

Upstairs Opposite Administration

8.30 am - 10.00 am

WEDNESDAY 26th FEBRUARY

Enquiries: Jan Peach 0487 466 109

janpeach8@bigpond.com



**ASIA PACIFIC
BRIDGE FEDERATION**
Open Event

The Joseph Greenfeld Congress

APRIL 15-22 2020

**Perth Convention Centre
Western Australia**



PLAY BRIDGE WITH BARRY

Barry Rigal



Sometimes your deceptive play can come from the idea of saving your honors for later, when you can get the maximum use out of them.

Dir: East
Vul: E/W

♠ K 7 5
♥ A 7 4
♦ Q J 6
♣ A 8 7 4

♦4

| | | |
|---|---|---|
| N | | E |
| W | | |
| | S | |

♠ A J 10 9 8 2
♥ K 8 5
♦ 5
♣ K 6 5

| | | | |
|----------|-------|------|-------|
| West | North | East | South |
| | 1♣ | Pass | 1♠ |
| Pass | 1NT | Pass | 4♠ |
| All Pass | | | |

Contract: 4♠ by South

Lead: ♦4

When West leads the four of diamonds (fourth highest) what is your best route to ten tricks?

Solution:

Dir: East
Vul: E/W

♠ Q 6 4
♥ Q 9 3 2
♦ K 10 8 4
♣ J 9

| | | |
|---|---|---|
| N | | E |
| W | | |
| | S | |

♠ 3
♥ J 10 6
♦ A 9 7 3 2
♣ Q 10 3 2

♠ A J 10 9 8 2
♥ K 8 5
♦ 5
♣ K 6 5

You play four spades on a low diamond lead. Is there a declarer among us who would not put up an honour from dummy at trick one?

The result of this play is that if East wins and does not return the suit (allowing South to discard and then discard again upon the established diamond honour) South is likely to lose a trick in each suit, and make only nine tricks.

Now let's see what happens if South plays low from dummy at trick one. It is going to take a pretty brave East player to insert the nine and run the risk of losing to a singleton ten in declarer's hand, or possibly even to a doubleton ten, if West's lead was from K84 originally.

Surely the majority of East players will put up the ace and shift to the heart jack. This will enable South to make a routine loser-on-loser play in diamonds at some later point in the deal for his contract (South runs the diamond queen discarding a club, and later discards a heart on the diamond jack.) so he loses two diamonds and a trump but no heart or club.

Sage

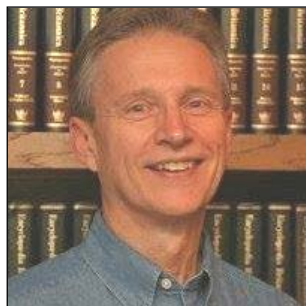
Cafe Restaurant



Award winning Sage Restaurant offers a simple and diverse menu, breakfast, lunch and dinner. Extremely tasty and prepared to perfection. You'll love the casual ambience and the excitement of being in the heart of Broadbeach. Enjoy pasta, pizza or steaks, it will not disappoint.

WELCOME TO NEW PLAYERS AT THE GCC

Brent Manley



Have You Discussed? Part 5: Takeout Doubles Part 2

We left off in yesterday's edition with a discussion of takeout doubles – what you should have and when you should just pass.

Many new players I have encountered seem unfamiliar with the standard responses to partner's takeout double, possibly because so many of the doubles are made on inappropriate hands. When this happens repeatedly, the doubler's partner becomes gun shy, afraid to bid more for fear it will just mean going down more.

You and your partner should discuss the minimum that a takeout double should deliver – roughly an opening hand and at least three-card support for unbid suits. You can make an exception when you have a strong hand and a strong suit – the kind of hand that you can't show with a simple overcall. For example, you hold: ♠A K Q J 10 7 ♥A ♦Q 3 2 ♣J 6 5

Your right-hand opponent opens 1♥. You double, LHO passes and partner bids 2♣. RHO passes and you bid 2♠. Your bidding shows this kind of hand. If you had one more trick – another spade would do – you might consider jumping to 3♠ to show a real rock crusher. You don't need much from partner to make a game.

You may already have a scheme for replying to takeout doubles. If so, congratulations. It's probably still worth your time to check this out and discuss it to be sure you and partner are on the same page.

When partner doubles and the next hand passes:

With 0-8 points, bid your best suit at the cheapest level.

For example, you hold: ♠J 5 ♥10 7 6 4 ♦8 5 2 ♣Q 7 6 2

| West | North <i>Partner</i> | East | South You |
|------|-------------------------|------|--------------|
| 1♦ | Dbl | Pass | ? |

Bid 1♥. Don't go to the two level if you don't have to. Here's another. Partner doubles a 1♦ opener and RHO passes. You hold: ♠Q J 10 8 ♥K J 6 ♦8 5 ♣K 10 6 4

If you bid 1♠ with this hand, partner will play you for 0-8 points and will probably go quietly. You could easily miss a game. Bid 2♠ (9-11 points) to let partner know you have more than a minimum response. Think of your hand as "raising" partner. For example, say partner opens one of a minor and you respond 1♥, followed by a pass and 1♠ from partner.

If you had 10-11 support points, your next bid would be 3♠, right? Just think of it that way when partner makes a takeout double. There are a couple of occasions when it's right to bid opener's suit. One is when you have an opening hand. A cuebid says game is likely if you can find a good fit. The other is when you have invitational values and both majors, perhaps ♠J 10 7 6 ♥A K 9 4 ♦Q 10 9 ♣6 4

Partner doubles an opening bid of 1♣. Your RHO passes. You are virtually certain you have an eight-card fit in one of the majors, but you don't want to guess. Remember, partner could easily have four of one major and three of the other. Your best action is to bid 2♣. Partner will surely pick a major. You can then raise that major to show four-card support and enough to invite game.

You may be wondering if it's ever right to pass partner's double of an opening bid.

You can do so if you have length and strength in opener's suit, say ♠K Q J 10 9 after your left-hand opponent opens 1♠. If partner doubles for takeout and you have another high card or two, you have a reasonable pass. Note that when advancer passes a takeout double, the doubler normally leads a trump. You and partner want to get started pulling declarer's trumps so that he cannot use low ones for ruffing.

Tomorrow: Final words on takeout doubles.

THE KLINGER QUIZ

Ron Klinger



This series of quizzes consist of defensive problems, with some deals from actual tournaments. Here is the fifth problem:

| | | | | | |
|----------------|-------------|------|-----------------|------|-----------------|
| Dlr: North | ♠ A J 7 3 | West | North | East | South |
| Vul: E/W | ♥ K J 9 7 6 | | 1♥ | Pass | 1♠ |
| Teams | ♦ K 8 | Pass | 2♠ | Pass | 3♣ ¹ |
| You (W) | ♣ 9 7 | Pass | 3♦ ² | Dbf | 4♠ |
| ♠ K 6 | | Pass | Pass | Pass | |
| ♥ A 10 5 2 | | | | | |
| ♦ 6 5 3 2 | | | | | |
| ♣ A Q 2 | | | | | |



¹ 3+ clubs, seeking help in clubs

² Some help in clubs and diamonds

Contract: 4♠ by South

Lead: ♦5

1. West leads the ♦5: king – ace – four.
2. East switches to the ♣J: king – ace – seven.
3. West cashes the ♣Q: nine – eight – three.

What next?

Solution:

| | | |
|---------------|-------------|----------------|
| Dealer: North | ♠ A J 7 3 | |
| Vul: E/W | ♥ K J 9 7 6 | |
| Teams | ♦ K 8 | |
| | ♣ 9 7 | |
| ♠ K 6 | | ♠ 5 |
| ♥ A 10 5 2 | | ♥ Q 8 4 3 |
| ♦ 6 5 3 2 | | ♦ A Q 10 9 7 |
| ♣ A Q 2 | | ♣ J 10 8 |
| | | ♠ Q 10 9 8 4 2 |
| | | ♥ --- |
| | | ♦ J 4 |
| | | ♣ K 6 5 4 3 |

There were ten North-South pairs in 4♠ in the Junior Teams (under 26) at the 2018 Asia Pacific Youth Championships. Nine were defeated easily enough. South has two diamonds and two clubs to lose on normal defence.

One South made 4♠. It happened this way. After the ♦5 lead, won by East, and the ♣J switch, king, ace, West cashed the ♣Q. West should now play another diamond and 4♥ is one light.

West unwisely played the ♥A at trick 4. South ruffed, ran the ♠10, cashed the ♠A and the ♥K, discarding the ♦J, ruffed a heart and ruffed a club for ten tricks, +420, +10 IMPs.

You might want to blame East for not cashing the ♦Q at trick 2, but that would have been foolish if South began with ♦J-x-x and ♣A-x-x-x. East's club switch was sensible.

West should realise that if South has a heart loser it cannot be discarded. Dummy has no winners on which South can pitch a singleton hearts and South will not be able to discard dummy's five hearts. On the actual layout, West can play any card other than a heart and 4♠ is destined to fail.

Ask not what your partner can do for you. Ask what you can do yourself.

2020 Bridge Holidays with Ron & Suzie Klinger

Tangalooma Wild Dolphin Resort

Sunday-Sunday, August 2-9

Crystal Symphony Cruise

August 19 - September 1
Amsterdam to Barcelona,
visiting France, Portugal and Spain

Norfolk Island

Sunday to Sunday, October 25-November 1

Brochures available on request:

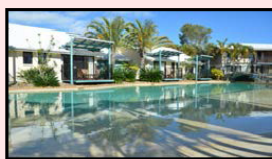
Tel: (02) 9958 5589

Email: suzie@ronklingerbridge.com

ANDY HUNG BRIDGE HOLIDAYS

Noosa Bridge Holiday

May 4 – 9, 2020



The All-Inclusive Package:

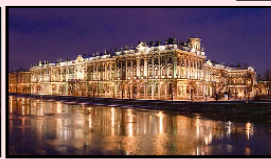
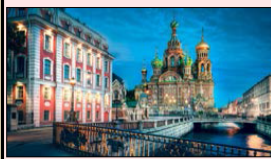
- ♥ Five nights at the Ivory Palms Resort
- ♥ All bridge activities; professional seminars with a full set of notes, duplicate sessions
- ♥ Topic theme: Mastering Defence (Better Planning on Defence, Signalling, Important Techniques)
- ♥ All meals incl. afternoon teas commencing with welcome lunch on Monday to finishing lunch on Saturday, except for one dinner

Pricing: *Non-bridge players reduced by \$400

- ♦ Single: \$1749 ♦ Double or 2 bed 1 bath: \$1549 pp
- ♦ 2 bed 2 bathroom: \$1649pp ♦ Enquire for other possibilities

St. Petersburg (Russia)

Oct 2 – 11, 2020



The All-Inclusive Package:

- ♥ Nine nights at the 4-star Hotel Holiday Inn
- ♥ All bridge activities (seminars, notes, duplicate)
- ♥ All breakfasts (fully cooked + continental) and dinners (Russian cuisine!), except for one night where you are free to roam around
- ♥ Many fantastic tours with our own private guide
- ♥ A night out to see the opera or ballet

Pricing: SPECIAL: Early bird \$250 discount by 1/3/20

- ♦ Single: \$3495 ♦ Double or T/S: \$3095
- *Non-bridge players welcome – cost is reduced by \$350

Contact: Andy Hung

✦ Email: hung.andy.p@gmail.com | Phone: 0425-101-094

♠♥♦♣ www.andyhungbridge.com ♠♥♦♣

For full brochures, visit Andy's website above!



MARGARET RIVER (WINE REGION) BRIDGE HOLIDAY

Sunday 15th – Friday 20th November 2020 (6 Days 5 Nights)



Andy Hung invites you to a relaxing getaway Bridge Holiday at the Abbey Beach Resort in Busselton, WA. This beachfront resort offers a variety of facilities and is a great way to visit the unique wineries, boutiques, and restaurants in the Margaret River Wine Region. For the bridge, there will be four fantastic lessons about the troubles and confusion that we get into with doubles!

The All-Inclusive Package:

- ♥ Five nights at the Abbey Beach Resort (airfare not included)
- ♥ All bridge activities; professional seminars with a full set of notes, duplicate sessions, and hand analysis and discussion
- ♥ All meals including afternoon teas commencing with the welcome lunch on Sunday to finishing lunch Friday, except for one dinner where you are free to enjoy a pleasant evening wherever you wish!
- ♥ Farewell drinks with Friday lunch
- ♥ Winery Tour

Pricing: ♦ Single: \$1849 pp ♦ Double or Twin: \$1749 pp

*Non-bridge players reduced by \$400

The Bridge:

- ♣ Professional bridge seminars with Andy
- ♣ Topic focus: Trouble with Doubles
 - Competitive Doubles (how to apply them)
 - Support doubles (when to apply them)
 - Doubling in high level auctions

Contact, or for the full Brochure:

✦ David Stern (Preferred)

Email: david.stern.general@gmail.com
Phone: 0411-111-655

✦ Andy Hung

Email: hung.andy.p@gmail.com
Phone: 0425-101-094



AN EVERYDAY ESCAPE

OASIS

THE OASIS

The Oasis on Broadbeach Shopping Centre

The Oasis on Broadbeach is located a short 5 minute walk from the GC Convention Centre! It offers a relaxing environment where you can find Woolworths, Restaurants, Newsagency, Chemist, Food outlets, Jewellers, Bookshops as well as many other shops who will be able to fulfil all of your needs

Insurance for Members



TBIB does Home and Contents Insurance for
ABF Members,

and,

We also do Landlords and Investment Property
Insurance for ABF Members,

and

TBIB can cover your car, boat or caravan,

and,

You can pay by the month at no extra cost,

and,

The same team that looks after your Travel
Insurance can look after it for you.

**INTERESTED? TALK TO US RIGHT HERE AT THE GCC
FROM THE 24TH TILL THE 28TH OF FEBRUARY 2020.**

**Drop in and register to get a chance to spin Steve's
Prize Wheel AND the Lucky Star to win Bridge gift
vouchers and a bunch of TBIB goodies.**

Don't miss out!

QUALIFYING SCORES AFTER 4 OF 12 ROUNDS – OPEN

| Place | No. | Team Members | | | | Score | |
|-------|-----|--|-------|-------|-----|--------------|-------|
| 1 | 17 | R Krochmalik - P Lavings - G Kozakos - S Burgess - A De Livera | | | | 71.36 | |
| 2 | 1 | A Bach - M Brown - M Whibley - A Antonios - N Edgtton | | | | 67.81 | |
| 3 | 2 | S Ashton - P Gill - S Hans - M Fleisher - A Hung | | | | 64.52 | |
| 4 | 19 | J Skipper - J Skipper - R Solomon - L Geursen | | | | 63.65 | |
| 5 | 11 | P Gumby - W Lazer - B Neill - R Cooper | | | | 63.09 | |
| 6 | 39 | M Vadas - T Nunn - A Peake - L Adams | | | | 62.96 | |
| 7 | 35 | C Ding - H Yuan - P Jeffery - Y Li | | | | 62.53 | |
| 8 | 20 | K Fung - J Smith - N Giura - N Hughes | | | | 61.74 | |
| 9 | 6 | P Dalley - K Dyke - J Tutty - M Bookallil | | | | 61.34 | |
| 10 | 8 | K Mccallum - A Johannsson - E Otvosi - J Smederevac - S Wernle | | | | 60.91 | |
| Place | No. | Team | Score | Place | No. | Team | Score |
| 11 | 10 | Buchen | 60.60 | 124 | 182 | Warnock | 39.27 |
| 12 | 7 | Van Der Vlugt | 60.49 | 125 | 83 | Afflick | 39.17 |
| 13 | 29 | Hoffman | 59.31 | 125 | 138 | Thorp | 39.17 |
| 14 | 3 | Ware | 58.88 | 127 | 126 | Abrams | 39.14 |
| 15 | 38 | Gallasch | 58.59 | 128 | 161 | Berry | 38.81 |
| 16 | 73 | Muir | 58.12 | 129 | 225 | Mollestam | 38.68 |
| 17 | 67 | Yoon | 57.57 | 130 | 179 | Sullivan | 38.21 |
| 18 | 22 | Stern | 57.51 | 131 | 117 | Berger | 38.16 |
| 19 | 24 | D Lusk | 56.77 | 132 | 101 | Kalma | 37.98 |
| 20 | 63 | Adler | 56.74 | 133 | 187 | Holewa | 37.64 |
| 21 | 16 | Mcmullin | 56.62 | 134 | 149 | Steele | 37.55 |
| 22 | 52 | Crichton | 56.27 | 135 | 231 | Scott | 37.34 |
| 23 | 33 | M Carter | 56.03 | 136 | 177 | Mcalister | 37.20 |
| 24 | 4 | Milne | 55.72 | 137 | 215 | Baldwin | 37.19 |
| 25 | 5 | Apteker | 55.34 | 138 | 220 | Ajzner | 37.03 |
| 26 | 94 | Fox | 55.28 | 139 | 103 | Arul | 37.01 |
| 27 | 26 | Pemberton | 55.19 | 140 | 227 | Brucker | 36.78 |
| 28 | 47 | Burrows | 54.87 | 141 | 113 | Weathered | 36.74 |
| 29 | 43 | Fisher | 54.72 | 142 | 160 | Pisko | 36.61 |
| 30 | 235 | Fitzsimons | 54.42 | 143 | 189 | K Mcdonald | 36.30 |
| 31 | 81 | M Johnson | 54.34 | 144 | 88 | Johnstone | 36.12 |
| 32 | 41 | Weston | 54.16 | 145 | 110 | Hannah-Brown | 36.04 |
| 33 | 91 | Lee | 53.94 | 146 | 108 | Delany | 35.98 |
| 34 | 208 | Dean | 53.88 | 147 | 192 | Fletcher | 35.96 |
| 35 | 116 | Steinwedel | 53.38 | 148 | 80 | Martelletti | 35.54 |
| 36 | 31 | Waters | 53.31 | 149 | 98 | Glyn | 35.24 |
| 37 | 105 | J Martin | 53.14 | 150 | 193 | Bell | 35.11 |
| 38 | 40 | Ridgway | 53.12 | 151 | 118 | Kalmin | 34.99 |
| 39 | 130 | G Allen | 52.88 | 152 | 79 | Shami | 34.95 |
| 40 | 82 | Luck | 52.85 | 153 | 164 | Howes | 34.91 |
| 41 | 53 | Nash | 52.56 | 154 | 163 | Nilsson | 34.56 |
| 42 | 37 | Wilkinson | 52.44 | 155 | 54 | Fleischer | 34.22 |
| 43 | 66 | Chadwick | 52.39 | 156 | 140 | Murray-White | 34.20 |
| 44 | 55 | Dawson | 51.81 | 157 | 172 | T Thatcher | 34.00 |
| 45 | 9 | Beauchamp | 51.76 | 158 | 151 | Broome | 33.95 |
| 46 | 46 | P Carter | 51.74 | 159 | 135 | Harman | 33.89 |
| 47 | 96 | Steffensen | 51.53 | 160 | 62 | Brockwell | 33.87 |
| 48 | 75 | Mayo | 51.48 | 161 | 122 | Mangos | 33.72 |
| 49 | 153 | Bugler | 50.47 | 162 | 139 | Fitz-Gerald | 33.68 |
| 50 | 50 | De Luca | 50.37 | 163 | 87 | Parker | 33.66 |
| 51 | 14 | Christie | 50.11 | 164 | 71 | Weaver | 33.62 |
| 52 | 106 | Free | 49.89 | 165 | 125 | Rhodes | 33.02 |
| 53 | 32 | Ward | 49.41 | 166 | 196 | Taylor | 32.34 |
| 54 | 124 | Zulfiqar | 48.97 | 167 | 97 | S Brown | 32.33 |
| 55 | 102 | C Martin | 48.80 | 168 | 77 | Robb | 32.22 |
| 56 | 74 | Mott | 48.74 | 169 | 201 | Reynolds | 32.11 |
| 57 | 127 | Lindner | 48.18 | 170 | 234 | Flicker | 32.02 |
| 58 | 49 | S Lusk | 47.89 | 171 | 166 | Hymus | 31.86 |
| 59 | 93 | Jackman | 47.85 | 172 | 175 | Leach | 31.58 |
| 60 | 61 | Moore | 47.82 | 173 | 229 | Procel | 31.55 |

| | | | | | | | |
|-----|-----|-----------------|-------|-----|-----|--------------|-------|
| 61 | 27 | Frazer | 47.44 | 174 | 162 | Pepper | 31.54 |
| 62 | 119 | Jeffery | 47.24 | 175 | 171 | Rudzyn | 31.40 |
| 63 | 44 | Simpson | 47.20 | 176 | 169 | Tuxworth | 31.26 |
| 64 | 207 | Tucker | 46.87 | 177 | 107 | Gariepy | 31.18 |
| 65 | 129 | S Carter | 46.52 | 178 | 168 | Grant | 30.96 |
| 66 | 34 | Watts | 46.37 | 179 | 142 | Foreman | 30.83 |
| 67 | 218 | Spencer | 46.12 | 180 | 203 | Hart | 30.70 |
| 68 | 85 | Badley | 45.99 | 181 | 170 | Stewart | 30.69 |
| 69 | 64 | Mundell | 45.95 | 182 | 185 | Mcpaul | 30.65 |
| 70 | 15 | The Stream Team | 45.88 | 183 | 191 | Mathews | 30.59 |
| 71 | 51 | Janisz | 45.81 | 184 | 209 | Sharp | 30.52 |
| 72 | 183 | Tomlinson | 45.57 | 185 | 128 | Morgan-King | 30.19 |
| 73 | 133 | Bogatie | 45.48 | 186 | 167 | Lorraway | 30.14 |
| 74 | 99 | Watt | 45.43 | 187 | 199 | Jenkins | 29.82 |
| 75 | 224 | Webb | 45.38 | 187 | 200 | Rose | 29.82 |
| 76 | 69 | Bolt | 45.31 | 189 | 84 | Frazier | 29.77 |
| 77 | 13 | Nagy | 45.29 | 190 | 48 | Vasandakumar | 29.65 |
| 78 | 157 | Zeller | 45.27 | 191 | 150 | Valentine | 29.60 |
| 79 | 143 | Forsyth | 45.08 | 192 | 155 | C Bourke | 29.47 |
| 80 | 18 | T Brown | 44.94 | 193 | 147 | I Cooke | 29.22 |
| 81 | 57 | Lamport | 44.92 | 194 | 141 | Abbenbroek | 29.21 |
| 82 | 21 | Wen | 44.66 | 195 | 211 | J Thatcher | 28.95 |
| 83 | 56 | Askew | 44.51 | 196 | 156 | Longmire | 28.93 |
| 84 | 68 | Creet | 44.37 | 197 | 173 | Young | 28.64 |
| 85 | 42 | Henry | 44.33 | 198 | 123 | Fallet | 28.44 |
| 86 | 233 | Snelling | 44.21 | 199 | 232 | Gonthier | 28.34 |
| 87 | 30 | Bloom | 44.17 | 200 | 228 | Inglis | 28.12 |
| 88 | 148 | Jakes | 44.10 | 201 | 120 | Alexander | 27.94 |
| 89 | 131 | Schargel | 43.91 | 202 | 184 | Parkin | 27.67 |
| 90 | 112 | Mottram | 43.90 | 203 | 197 | Cordingley | 27.65 |
| 91 | 205 | D Johnson | 43.86 | 204 | 210 | De Palo | 27.57 |
| 92 | 132 | Scrivens | 43.63 | 205 | 178 | Owen | 27.35 |
| 93 | 188 | Garrick | 43.61 | 206 | 223 | Hollands | 27.29 |
| 94 | 72 | Konig | 43.42 | 207 | 198 | L Bourke | 27.05 |
| 95 | 12 | Haffer | 42.99 | 208 | 152 | T Allen | 26.98 |
| 96 | 121 | Clarke | 42.87 | 209 | 137 | Bugeia | 26.97 |
| 97 | 70 | Driscoll | 42.85 | 210 | 146 | Tredrea | 26.89 |
| 98 | 25 | St Clair | 42.67 | 211 | 195 | J Havas | 26.32 |
| 99 | 90 | Dreyer | 42.50 | 212 | 100 | Callander | 25.80 |
| 100 | 23 | Perley | 42.48 | 213 | 213 | Greenwood | 25.69 |
| 101 | 89 | Dormer | 42.42 | 214 | 221 | Prickett | 24.86 |
| 102 | 111 | Kahler | 42.25 | 215 | 186 | Houghton | 24.56 |
| 103 | 114 | Bailey | 42.00 | 216 | 145 | Moffat | 24.49 |
| 104 | 78 | Fleet | 41.91 | 217 | 92 | Bedi | 24.31 |
| 105 | 95 | Gunner | 41.86 | 218 | 104 | Palmer | 23.95 |
| 106 | 134 | Draper | 41.61 | 219 | 216 | Orsborn | 23.93 |
| 107 | 58 | Mcgrath | 41.58 | 220 | 144 | Crockett | 22.60 |
| 108 | 60 | Chen | 41.40 | 221 | 204 | Sadigh | 22.57 |
| 109 | 36 | Richman | 41.30 | 222 | 190 | Yarwood | 22.53 |
| 110 | 59 | Zhou | 41.22 | 223 | 202 | Blankfield | 21.47 |
| 111 | 226 | Sweetman | 41.15 | 224 | 212 | C Cooke | 20.71 |
| 112 | 115 | Finikiotis | 41.00 | 225 | 236 | Cresswell | 20.25 |
| 113 | 206 | Hamilton | 40.81 | 226 | 194 | Campbell | 19.48 |
| 114 | 158 | Stralow | 40.78 | 227 | 176 | Radcliffe | 18.63 |
| 115 | 86 | Birss | 40.38 | 228 | 219 | Millet | 18.18 |
| 116 | 76 | Biltoft | 40.31 | 229 | 217 | P Mcdonald | 18.13 |
| 117 | 180 | Sykes | 40.26 | 229 | 154 | Dawes | 18.13 |
| 118 | 28 | E Havas | 40.17 | 231 | 214 | Theodore | 17.50 |
| 119 | 65 | Mckinnon | 40.11 | 232 | 136 | Mitchell | 16.95 |
| 120 | 109 | Anderson | 40.00 | 233 | 181 | Ranke | 15.95 |
| 121 | 45 | Page | 39.97 | 234 | 174 | Boyce | 14.76 |
| 122 | 165 | Eldridge | 39.72 | 235 | 159 | Purkiss | 14.47 |
| 123 | 222 | Geare | 39.42 | 236 | 230 | Woodhall | 14.18 |

QUALIFYING SCORES AFTER 4 OF 12 ROUNDS – INTERMEDIATE

| Place | No. | Team Members | | | | | Total |
|-------|-----|---|-------|-------|-----|------------------|-------|
| 1 | 2 | S Moffitt, K Moffitt, M Rogers, J Rogers | | | | | 62.81 |
| 2 | 51 | B Koster, D Chua, J Price, R Spelman | | | | | 62.17 |
| 3 | 31 | H Van Weeren, J Rogers, J Conroy, J Blenkey | | | | | 59.72 |
| 4 | 49 | J Aquino, J McMullan, B Taranto, M Doust | | | | | 59.63 |
| 4 | 45 | A Delorenzo, L Shonk, J Thomas, E Voveris | | | | | 59.63 |
| Place | No. | Team | Score | Place | No. | Team | Score |
| 6 | 8 | Lowe | 56.70 | 49 | 55 | Ramsund | 37.22 |
| 7 | 27 | Pike | 56.40 | 50 | 81 | Gordon | 37.20 |
| 8 | 78 | Saunders | 55.31 | 51 | 40 | Hertelendy | 37.17 |
| 9 | 29 | Elich | 55.11 | 52 | 48 | Bingham | 37.16 |
| 10 | 39 | Cleminson | 54.94 | 53 | 6 | Beckett | 37.15 |
| 11 | 5 | Carroll | 54.49 | 54 | 36 | Binsted | 36.30 |
| 12 | 15 | Robinson | 52.41 | 55 | 84 | Deaker | 36.25 |
| 13 | 32 | Lahey | 52.40 | 56 | 82 | Baker | 36.19 |
| 14 | 58 | Williams | 52.18 | 57 | 54 | Armstrong | 36.14 |
| 15 | 10 | Kent | 52.07 | 58 | 11 | Norman | 35.64 |
| 16 | 12 | Delaney | 51.75 | 59 | 68 | Riley | 35.44 |
| 17 | 33 | O'regan | 51.04 | 60 | 26 | Cooke | 35.06 |
| 18 | 13 | Argent | 50.68 | 61 | 16 | Raward | 34.98 |
| 19 | 70 | Morgan | 50.11 | 62 | 18 | Clift | 34.96 |
| 20 | 7 | Coroneo | 49.88 | 63 | 67 | Stick | 34.92 |
| 21 | 76 | Driscoll | 49.62 | 64 | 72 | Fookes | 34.66 |
| 22 | 25 | Erskine | 49.36 | 65 | 21 | Johnstone | 34.64 |
| 23 | 83 | Jacobs | 48.69 | 66 | 89 | Farley | 34.50 |
| 24 | 38 | Driver | 48.58 | 67 | 64 | Anderson | 34.38 |
| 25 | 24 | Rial | 48.06 | 68 | 56 | Bakas | 33.48 |
| 26 | 4 | Cariola | 47.90 | 69 | 62 | Colling | 33.31 |
| 27 | 52 | Kneebone | 47.44 | 70 | 65 | Gooley | 33.10 |
| 28 | 44 | Gibson | 47.37 | 71 | 57 | Wippell | 31.26 |
| 29 | 71 | Willcocks | 46.94 | 72 | 90 | Daffurn | 31.04 |
| 30 | 20 | Berry | 46.03 | 73 | 9 | Keating | 31.03 |
| 31 | 41 | Schwegler | 45.80 | 74 | 63 | Coventry | 30.99 |
| 32 | 14 | Nettle | 44.69 | 75 | 77 | Mcmaster | 29.85 |
| 33 | 87 | Stanhope | 44.56 | 76 | 69 | Hoschke | 29.13 |
| 34 | 22 | Mclay | 44.17 | 77 | 75 | Opray | 28.96 |
| 35 | 66 | Chaffey | 44.15 | 78 | 85 | Linden | 27.79 |
| 36 | 1 | Barfoot | 43.38 | 79 | 28 | Mcnaughton | 27.15 |
| 37 | 37 | Williamson | 42.68 | 80 | 23 | Webster | 27.13 |
| 38 | 86 | Walker | 42.24 | 81 | 88 | Woodbury | 25.02 |
| 39 | 43 | Bailey | 42.18 | 82 | 34 | Williamson | 22.75 |
| 40 | 50 | Hartwig | 41.00 | 83 | 3 | Kite | 22.64 |
| 41 | 35 | Sutherland | 40.99 | 84 | 74 | Bardone | 21.77 |
| 42 | 17 | Mcfall | 40.86 | 85 | 59 | Wallwork | 20.95 |
| 43 | 42 | Munro | 40.64 | 86 | 61 | Winter | 19.91 |
| 44 | 73 | Cluff | 39.73 | 87 | 47 | Routley | 19.47 |
| 45 | 80 | Boyd | 39.09 | 88 | 60 | Balmanno | 18.78 |
| 46 | 30 | Erlandson | 38.90 | 89 | 79 | Trengove | 18.34 |
| 47 | 19 | Stuart | 37.79 | 90 | 46 | Rossiter-Nuttall | 8.69 |
| 48 | 53 | Burrie | 37.59 | | | | |

QUALIFYING SCORES AFTER 4 OF 12 ROUNDS – RESTRICTED

| Place | No. | Team Members | | | | | Total |
|-------|-----|---|-------|-------|-----|----------------|-------|
| 1 | 30 | N Gillies, A Kolding, H Colenbrander, R Hurst | | | | | 70.36 |
| 2 | 35 | C Henke, J Gruszka, H Barnes, F Broos | | | | | 62.86 |
| 3 | 24 | D Harrah, D Saul, A Gedge, M Campbell | | | | | 62.33 |
| 4 | 9 | M Stevens, S Luby, M Gray, E Borda | | | | | 60.38 |
| Place | No. | Team | Score | Place | No. | Team | Score |
| 5 | 22 | D Williams | 60.36 | 54 | 75 | Clarke | 40.00 |
| 6 | 25 | Teitzel | 59.77 | 55 | 65 | Edginton | 39.98 |
| 7 | 40 | B Williams | 57.35 | 56 | 36 | Biddlecombe | 39.57 |
| 8 | 81 | Handa | 56.69 | 57 | 21 | Murray | 39.56 |
| 9 | 94 | Gurney | 56.13 | 58 | 83 | Innes | 39.03 |
| 10 | 87 | Mabin | 56.09 | 59 | 34 | Bain | 38.30 |
| 11 | 39 | Adams | 54.85 | 60 | 31 | Jacobsen | 36.86 |
| 12 | 23 | Redman | 54.46 | 61 | 95 | Rigter | 36.73 |
| 13 | 32 | Lipton | 54.07 | 62 | 102 | Mace | 36.64 |
| 14 | 63 | Nicholson | 53.28 | 63 | 99 | Mccondach | 35.03 |
| 15 | 5 | Brady | 53.25 | 64 | 79 | Irwin | 34.65 |
| 16 | 88 | Tattersfield | 51.69 | 65 | 69 | Doyle | 34.43 |
| 17 | 97 | Glyde | 51.22 | 66 | 3 | Horne | 34.26 |
| 18 | 26 | Savage | 50.35 | 67 | 54 | Coloper | 33.80 |
| 19 | 42 | Feyder | 50.22 | 68 | 90 | Matthews | 33.72 |
| 20 | 13 | Bardos | 50.02 | 69 | 58 | Carter | 33.40 |
| 21 | 7 | Walsh | 49.75 | 70 | 41 | Bowen-Thomas | 33.14 |
| 22 | 33 | Brown | 48.14 | 71 | 52 | Fogarty | 32.65 |
| 23 | 44 | Main | 47.90 | 72 | 50 | Stoney | 32.53 |
| 24 | 47 | Marsland | 47.65 | 73 | 51 | Reilly | 32.05 |
| 25 | 4 | Yoffa | 47.53 | 74 | 2 | Brassil | 31.71 |
| 26 | 53 | Crommelin | 47.33 | 75 | 19 | Yang | 31.62 |
| 27 | 80 | Moss | 47.27 | 76 | 11 | Van Kruistum | 31.41 |
| 28 | 28 | Argent | 46.84 | 77 | 20 | Hall | 31.38 |
| 29 | 71 | B Hunt | 46.83 | 78 | 66 | Burns | 30.99 |
| 30 | 15 | Jenner | 46.69 | 78 | 48 | Callan | 30.99 |
| 31 | 16 | Mcclintock | 46.66 | 80 | 12 | Webb | 30.80 |
| 32 | 43 | Power | 46.48 | 81 | 14 | Look | 30.41 |
| 33 | 6 | Gibbards | 46.47 | 82 | 57 | Hone | 30.26 |
| 34 | 93 | Imlach | 45.77 | 83 | 29 | Brink | 29.61 |
| 35 | 18 | Jones | 45.53 | 84 | 8 | Bishop | 29.36 |
| 36 | 96 | Grant | 45.19 | 85 | 27 | Hamilton-Reen | 29.14 |
| 37 | 64 | Hooper | 44.75 | 86 | 37 | Angel | 27.39 |
| 38 | 84 | Meakin | 44.71 | 87 | 61 | Wilson | 27.34 |
| 39 | 76 | Singer | 44.49 | 88 | 100 | Van Nooten | 26.95 |
| 40 | 85 | Hartley | 44.25 | 89 | 17 | Elliott | 26.80 |
| 41 | 82 | Bunting | 43.97 | 90 | 101 | Hanbury-Webber | 26.39 |
| 42 | 59 | Mcauliffe | 43.92 | 91 | 60 | Gilmour | 25.95 |
| 43 | 89 | Paul | 43.22 | 92 | 10 | Duncan | 25.42 |
| 44 | 67 | Gaylard | 42.97 | 93 | 46 | Muller | 25.36 |
| 45 | 49 | Gray | 42.91 | 94 | 68 | Chapple | 24.36 |
| 46 | 56 | Pettersen | 42.85 | 95 | 38 | Waters | 23.21 |
| 47 | 92 | S Hunt | 42.51 | 96 | 45 | Sharp | 23.19 |
| 48 | 74 | Clark | 41.66 | 97 | 70 | Yates | 22.99 |
| 49 | 1 | Cullen | 40.92 | 98 | 72 | Deane | 22.81 |
| 50 | 73 | Fraser | 40.58 | 99 | 91 | C Joseph | 20.84 |
| 51 | 98 | J Joseph | 40.30 | 100 | 86 | Jackson | 17.29 |
| 52 | 62 | Houston | 40.27 | 101 | 78 | Rauchberger | 14.95 |
| 53 | 55 | Ledger | 40.02 | 102 | 77 | Greasley | 12.69 |

QUALIFYING SCORES AFTER 4 OF 12 ROUNDS – NOVICE

| Place | Team | Team Members | | | | | Total |
|-------|------|--|-------|-------|-----|------------|-------|
| 1 | 10 | D Young, S Parsons, A Pappas, S Pappas | | | | | 66.91 |
| 2 | 14 | R Sheldrake, G Jenkyn, P Nigem, D Stacey | | | | | 63.23 |
| 3 | 8 | C Speller, J Gudaitis, C Kleinig, J Stephens | | | | | 55.37 |
| 4 | 15 | S Pandya, W Cuthbert, L Laffan, U Shanti | | | | | 53.90 |
| Place | No. | Team | Score | Place | No. | Team | Score |
| 5 | 9 | Hume | 52.96 | 23 | 23 | Gilmour | 38.39 |
| 6 | 1 | Sutherland | 52.63 | 24 | 29 | Lazar | 38.17 |
| 7 | 12 | Clifford | 52.49 | 25 | 3 | Casey | 38.15 |
| 8 | 18 | Markovic | 51.87 | 26 | 16 | Gilder | 37.70 |
| 9 | 17 | Duke | 51.27 | 27 | 20 | Richards | 36.69 |
| 10 | 4 | King | 47.35 | 28 | 13 | Howitt | 34.06 |
| 11 | 22 | Burley | 47.18 | 29 | 24 | Mathieson | 33.11 |
| 12 | 32 | Friedlaender | 46.79 | 30 | 19 | Green | 33.00 |
| 13 | 11 | Moule | 44.60 | 31 | 38 | Deague | 29.61 |
| 14 | 31 | Bickford | 43.55 | 32 | 33 | Zigouras | 28.76 |
| 15 | 25 | Hall | 42.84 | 33 | 39 | Mckay | 28.05 |
| 16 | 36 | Clarke | 42.47 | 34 | 35 | Mckeough | 27.58 |
| 17 | 5 | Doepel | 42.37 | 35 | 26 | Stenson | 27.03 |
| 18 | 21 | Bright | 41.01 | 36 | 6 | Anderson | 26.20 |
| 19 | 30 | Reeve | 40.50 | 37 | 34 | Hanlon | 24.29 |
| 20 | 7 | Murray | 40.40 | 38 | 40 | Richardson | 21.68 |
| 21 | 28 | Kotros | 40.39 | 39 | 27 | Williams | 19.61 |
| 22 | 2 | Steele | 39.94 | 40 | 37 | Martens | 17.90 |

0-50 MP Pairs – Tuesday

| Place | North-South | % | Place | East-West | % |
|-------|--|-------|-------|--------------------------------------|-------|
| 1 | Philip Argyris - Rob Swann | 64.65 | 1 | Jenny Burchmore - Barbara Richardson | 59.57 |
| 2 | Jane Tagney - Robin Bishop | 61.46 | 2 | Carol Wright - Teena Haslam | 58.17 |
| 3 | Jamshid Vazirzadeh - Mike Martin | 60.05 | 3 | Stephen Bennett - Louise Bennett | 57.71 |
| 4 | Jenny Andrews - Julie Sheehan | 58.46 | 4 | James Tulloch - Kerin Tulloch | 57.44 |
| 5 | Jane Gordon - Marjory Harms | 57.68 | 5 | Melva Leal - Sue Lind | 56.54 |
| 6 | Alison Bouris - Rosalie Roosenburg | 57.12 | 6 | Maxim Wilson - Bruce Stephens | 55.63 |
| 7 | Michael Walsh - William Han | 56.90 | 7 | Marina Green - Marjory Tyson | 54.95 |
| 8 | Marcelle Goslin - Anne Birt | 56.57 | 8 | Vanessa Wells - Helen Baran | 54.79 |
| 9 | Frances Hammond - Ian Hammond | 56.15 | 9 | Althea Crowley - Persephone Lobb | 54.56 |
| 10 | June Drysdale - Phil Griffiths | 54.92 | 10 | Jan Flanigan - Judy Wallace | 54.03 |
| 11 | Joanna Reid - Michael Hogan | 54.47 | 11 | Kim Rouse - Lesley Rouse | 53.99 |
| 12 | Kirsty Hutton - Cindy Christian | 54.43 | 12 | Chris Green - Graham Killoran | 53.55 |
| 13 | Tibor Toth - David Saunders | 53.44 | 13 | Barry Braithwaite - Andrew Gordon | 53.27 |
| 14 | Heather Douglas - David Douglas | 53.28 | 14 | Sandy Carter - Susan Eason | 52.90 |
| 15 | Kym Batt - Suzie Bucknell | 53.20 | 15 | Lynda Bennion - Midge Spice | 52.49 |
| 16 | Peter Fredericks - Thais Morgan-Pertus | 52.80 | 16 | Paddy Taylor - Emelia-Ros Taylor | 52.03 |
| 17 | Chris Trimblett - Jo Keylar | 52.78 | 17 | Michelle Wise - Kathie Smorgon | 51.97 |
| 18 | Diana Hotchkis - Karyn Aaker | 52.04 | 18 | Marie Downing - Selby Downing | 51.66 |
| 18 | Fenna Cooper - Louise Purdie | 52.04 | 19 | Mary King - Lauren Sanford | 51.62 |
| 20 | Bevley D'aquino - Lisa Mcconkey | 51.57 | 20 | Yvonne Wang - Tomoko Nakamatsu | 51.48 |
| 21 | Ange Bettess - Peter Lamont | 51.51 | 21 | Cia Adermann - Mary-Louis Churchill | 51.05 |
| 22 | Deanna Cruickshank - Janet Franklin | 50.79 | 22 | Suellen Mansour - Jan Williams | 50.14 |
| 23 | Ange Kerr - Philip Kerr | 49.30 | 23 | Jenny Reid - Dianne Dwyer | 50.04 |
| 24 | Neil Cawthorne - Annie Vaughan | 49.12 | 24 | Kathryn Kelly - Jan Ford | 49.81 |
| 25 | Bernice Cooper - Alice Edwards | 48.89 | 25 | Kate Ward - Kerry Flanagan | 49.44 |
| 26 | Margy Roskam - Keith Roskam | 48.57 | 26 | Gayleen Trevaskis - Jennifer Brangan | 49.42 |
| 27 | Fiona Balsillie - Marianne Treuen | 48.05 | 27 | Joyanne Gough - Debbie Adams | 48.74 |
| 28 | Peter Gavin - Debbie Gavin | 48.01 | 28 | Don Weerheim - Allie Hays | 48.68 |
| 29 | Nina Doyle - Ian Leach | 47.86 | 28 | Sharon Winocur - Sally Jones | 48.68 |
| 30 | Jenny Sanders - Keith Sanders | 47.85 | 30 | Denyse Stephens - Wendy Sheehan | 47.67 |
| 31 | Peter Neil - Linda Neil | 47.54 | 31 | Kerry Cross - Michael Cross | 47.63 |
| 32 | Thea Hobson - Desley Strik | 47.47 | 32 | Peter Leggo - Daphne Leggo | 47.47 |
| 33 | Jen Christie - Helen Jones | 46.69 | 33 | Helen Blake - Jenny Munro | 47.18 |

| | | | | | |
|----|---------------------------------------|-------|----|---|-------|
| 34 | Ros Arthur - Marcia Cameron | 46.61 | 34 | Andrew Arthur - Ali Lamond | 46.71 |
| 35 | Christine Dunlop - Roseanne Humphreys | 46.52 | 35 | John Burns - Judy Dwyer | 46.68 |
| 36 | Carolyn North - Sandra Aring | 46.28 | 36 | Di Brown - Vandra Braga | 45.39 |
| 37 | Ann Green - Philip Rinder | 46.14 | 37 | Vivienne Polak - Frances Burns | 45.28 |
| 38 | Jayne Francis - Sydney Rowan | 45.81 | 38 | Faye Carter - Brenda Hall | 45.10 |
| 39 | Heather Todd - Clare Gleeson | 45.27 | 39 | Derek Colenbrander - Anthony Colenbrander | 45.04 |
| 40 | Carolyn Jordan - Judy Smith | 44.86 | 40 | Linda Darnell - Mary Gibberd | 44.69 |
| 41 | Susie Fraser - Sandy Fraser | 42.94 | 41 | Tom Ferris - Lee Chenoweth | 44.60 |
| 42 | Frances Brown - Jan Thompson-Eycken | 40.20 | 42 | Deryl Mcconaghy - David Robinson | 43.82 |
| 43 | Raja Bawajee - Savi Bawajee | 40.08 | 43 | John Aldersley - Beryl Lowry | 43.46 |
| 44 | Jann Small - Suzanne Harrison | 39.41 | 44 | Carmel Dwan - Heather Mckelvie-Morris | 42.24 |
| 45 | Betty Markkanen - Collette Anderson | 35.19 | 45 | Lynne Talmont - Margaret Wayland | 41.87 |
| 46 | Julia Benfield - Phil O'shea | 35.03 | 46 | Alison Mighell - Tootie Wilkinson | 40.84 |

TUES AM Walk-in Pairs

| Place | North-South | Score | % | Place | East-West | Score | % |
|-------|-------------------------------------|-------|-------|-------|-----------------------------------|-------|-------|
| 1 | Eva Shand - Les Varadi | 682 | 66.47 | 1 | Paulette Bourke - Georgina Blum | 613 | 59.75 |
| 2 | Dianne Brinkworth - Christine Young | 620 | 60.43 | 2 | Joy Wesslink - Anne Cummins | 610 | 59.45 |
| 3 | Roger Thomas - Paul Tyminski | 597 | 58.19 | 3 | Fiona Trescowthick - Sarah Acton | 607 | 59.16 |
| 4 | Peter Langston - Marit Langston | 587 | 57.21 | 4 | Kevin Balkin - Pauline Balkin | 602 | 58.67 |
| 5 | Ian Halford - Michelle Radke | 560 | 54.58 | 5 | Dan Maher - Jene Jones | 580 | 56.53 |
| 6 | Alison Graham - Anette Bury | 558 | 54.39 | 6 | Judith Rychter - Geraldine Adams | 575 | 56.04 |
| 7 | Rozalyn Wright - Lesley-Ann Parry | 552 | 53.8 | 7 | Trish Waters - Anna Green | 562 | 54.78 |
| 8 | Helen Edgar - Janet Cook | 548 | 53.41 | 8 | Howard Rees - Brenda Rees | 560 | 54.58 |
| 9 | Pat Leighton - Ray Muld | 539 | 52.53 | 9 | Brian Craig - Susan Rowe | 553 | 53.9 |
| 10 | Dawn Benes - Lorraine Pescatore | 528 | 51.46 | 10 | Irene Campbell - Margaret Regan | 552 | 53.8 |
| 11 | Vicki Foots - Anne Alexander | 522 | 50.88 | 11 | Kathy Lawson - Geoffrey Lawson | 540 | 52.63 |
| 12 | Louise Greenfield - Pat-Irene Byrne | 511 | 49.81 | 12 | Sari Irlight - Judy Leiba | 515 | 50.19 |
| 13 | Tony Woolford - Noelle Kebby | 506 | 49.32 | 13 | Ray Ingielewicz - Pat Sleat | 497 | 48.44 |
| 14 | Claudia Gibson - Jann Simmonds | 475 | 46.3 | 14 | Ethel Lavin - Pam Schiller | 491 | 47.86 |
| 15 | J Roose-Driver - Johan Roose | 464 | 45.22 | 15 | Raelene Clark - Trevor Derryhouse | 424 | 41.33 |
| 16 | Bob Hart - Carolyn Hart | 448 | 43.66 | 16 | Mandie Draper - Peter Allingham | 407 | 39.67 |
| 17 | Margaret Bills - Jennifer Martin | 430 | 41.91 | 17 | Jane Hills - Rae Moir | 403 | 39.28 |
| 18 | Aggie Bowyer - Ann Richardson | 397 | 38.69 | 18 | Vicki Lloyd - Jo-Anne Bauer | 399 | 38.89 |
| 18 | Mathea Mccowage - Leone Nolan | 397 | 38.69 | 19 | Henrica Cary - Leif Michelsson | 393 | 38.3 |
| 20 | Vanda Cassim - Robina Cooper | 339 | 33.04 | 20 | David Callan - Doug Reinehr | 377 | 36.74 |

TUES PM Walk-in Pairs

| Place | North-South | Score | % | Place | East-West | Score | % |
|-------|-------------------------------------|-------|-------|-------|-----------------------------------|-------|-------|
| 1 | Roger Thomas - Paul Tyminski | 694 | 61.2 | 1 | Robert Sutton - Lorraine Carr | 686 | 60.49 |
| 2 | J Roose-Driver - Johan Roose | 661 | 58.29 | 2 | Lynda Bennion - Midge Spice | 670 | 59.08 |
| 3 | Eva Shand - Les Varadi | 655 | 57.76 | 3 | Fiona Trescowthick - Sarah Acton | 663 | 58.47 |
| 4 | Tomoko Nakamatsu - Yvonne Wang | 644 | 56.79 | 4 | Lauren Sanford - Mary King | 654 | 57.67 |
| 5 | Susan Rowe - Brian Craig | 627 | 55.29 | 5 | Janet Johnson - William Han | 640 | 56.44 |
| 6 | Gill Blakey - Ross Blakey | 621 | 54.76 | 6 | Pat Leighton - Ray Muld | 621 | 54.76 |
| 7 | Peter Langston - Marit Langston | 619 | 54.59 | 7 | Molly O'donohue - Gill Ross | 618 | 54.5 |
| 8 | Helen Edgar - Janet Cook | 606 | 53.44 | 8 | Joy Wesslink - Anne Cummins | 604 | 53.26 |
| 9 | Patty Laing - Jack Carson | 594 | 52.38 | 9 | Bernard Chidgey - Janet Keen | 603 | 53.17 |
| 10 | Louise Greenfield - Pat-Irene Byrne | 591 | 52.12 | 10 | Irene Campbell - Margaret Regan | 593 | 52.29 |
| 11 | J Thompson-Eycken - Frances Brown | 589 | 51.94 | 11 | Sari Irlight - Judy Leiba | 587 | 51.76 |
| 12 | Veena Chotai - Ashok Chotai | 569 | 50.18 | 12 | Susan Eason - Sandy Carter | 581 | 51.23 |
| 13 | David Saunders - Tibor Toth | 562 | 49.56 | 13 | Merrilyn Hooper - Wayne Hooper | 557 | 49.12 |
| 14 | Bob Hart - Carolyn Hart | 556 | 49.03 | 14 | T Morgan-Pertus - Leif Michelsson | 551 | 48.59 |
| 15 | Sally Jones - Sharon Winocur | 537 | 47.35 | 15 | Kevin Balkin - Pauline Balkin | 544 | 47.97 |
| 16 | Persephone Lobb - Althea Crowley | 531 | 46.83 | 16 | Jenny Reid - Dianne Dwyer | 539 | 47.53 |
| 17 | Claudia Gibson - Jann Simmonds | 521 | 45.94 | 17 | Gillian Robertson - Jane Hills | 519 | 45.77 |
| 18 | Dawn Benes - Lorraine Pescatore | 478 | 42.15 | 18 | Melva Leal - Sue Lind | 516 | 45.5 |
| 19 | Bruce Stephens - Maxim Wilson | 472 | 41.62 | 19 | Kelvin Wheeler - Maureen Pears | 454 | 40.04 |
| 20 | Vanda Cassim - Robina Cooper | 453 | 39.95 | 20 | Lynne Talmont - Margaret Wayland | 451 | 39.77 |
| 21 | Wendy Sheehan - Denyse Stephens | 448 | 39.51 | 21 | Michelle Wise - Kathie Smorgon | 415 | 36.6 |
| 22 | Margaret Bills - Jennifer Martin | 446 | 39.33 | 22 | Allie Hays - Don Weerheim | 408 | 35.98 |



Gold Coast Congress 2020 Celebrity Speakers



Located upstairs opposite Administration office
Min \$5 contribution to ABF Youth Bridge (free for Youth)

Thursday
9.30 – 10.15
William Jenner-O'Shea
Handling Interference After Our 1NT (And Interfering with Theirs)



How to compete to the best contract and bid your games after your 1NT gets overcalled. Will also discusses the most effective ways to interfere with their 1NT and some additional NT responses that you may not already play.
Will Jenner-O'Shea has represented Australia in several bridge events, including the World Mind Sports Games in Beijing in 2008. Will has also built a successful career teaching.

Thursday
2.00-2.45
Kim Frazer
Gaining the mental edge at Bridge



Kim will discuss one of the themes from her newly published book, **Match Pressure**, together with some real-life situations and hands which are featured in the book.
Kim Frazer represented Australia on numerous occasions in target shooting winning numerous Australian titles and other awards. She first represented Australia in Bridge in 2018 as a member of the Australian Women's Team.



ABF Technology Update

UPDATE



When: Wednesday 26 February 2:15pm
Where: Rooms 10/11/12 (stairs across from Bridge Administration Office)
Who: Mark Guthrie & Julian Foster

Come along and get an update on the ABF Technology Roadmap. See a prototype of the new systems and take the opportunity to ask questions. Feel free to bring your lunch.

All welcome (space allowing).

The screenshot displays the ABF Technology Roadmap dashboard. It features a sidebar with navigation links: Dashboard, Members, Membership, Clubs, Calendar, Forums, Payments, and Support. The main content area includes several widgets:

- Recent Change:** 53%
- Current Balance:** \$101.00
- Current Points:** 4
- Current Score:** 1,407 (14)

Below these are two tables:






| Date | Event | Partner(s) | Result |
|---------------|------------------|------------|--------|
| Today | 51st-52nd Points | Ray Jones | 2nd |
| Wednesday | 51st-52nd Points | Ray Jones | 2nd |
| 15th Feb 2020 | 51st-52nd Points | Ray Jones | 2nd |
| 15th Feb 2020 | 51st-52nd Points | Ray Jones | 2nd |

| Date | Event | Partner(s) | Change |
|---------------|----------------|------------|--------|
| 21st Feb 2020 | NSBO Pairs 2nd | Wally Post | ✓ |
| 21st Feb 2020 | NSBO Pairs 2nd | Wally Post | ✓ |
| 21st Feb 2020 | NSBO Pairs 2nd | Wally Post | ✓ |
| 21st Feb 2020 | NSBO Pairs 2nd | Wally Post | ✓ |

At the bottom, there are two green boxes with text:

- SABA:** You were 2nd in the Friday Day event. Click here for results.
- ADP:** The ADP is pleased to announce that... (text is partially obscured)

CALENDAR OF SOCIAL AND OTHER ACTIVITIES GOLD COAST

| | | Wednesday 26th February | Thursday 27th February | Friday 28th February |
|--|--|---|---|----------------------------|
| Venue | | | | |
| NOVICE AND ROOKIE ACTIVITIES | | | | |
| Rookies Help Available | In the Playing Area Rookies Section | 9:30am to 10:30am | | |
| Under 50MPs Help Available | In the Playing Area Under 50s Section | 10am to 10:30am | 10am to 10:30am | |
| Novices Help Available | In the Playing Area Novices Section | 10:00am to 10:30am | | |
| SOCIAL AND OTHER ACTIVITIES | | | | |
| Collection for Zephyr Education Inc. The GCC Official Charity Helping Children affected by Domestic Violence Getting Back to School | Foyer GCCEC Collection boxes and donation slips available | | | |
| Fashion Parade With our Guest Models Jill Dunning & Lana Politi | Change Alley Oasis Level 1 Outside Barcode Café |  | | |
| TBIB Daily Prize Wheel You Must be Present to Win. A TBIB lucky star under a chair in main playing area for a spin opportunity | Foyer GCCEC | | | |
| Trivia Night Hosted by Tony Treloar Teams to a Maximum of 8 Participants | Beachside Pavilion Beach End Oasis Shopping Centre | | | |
| Directors Get Together Hosted by Jan Peach | Upstairs Room 10 | 8:30am | | |
| Parade Entrants Feathers and Fauna Theme | Foyer GCCEC | 2:30pm to 2:45pm | | |
| Champagne Breakfast For Shoe Shoppers In Her Shoes | In Her Shoes Ground Floor Oasis Shopping Centre |  8:15am <small>local & imported shoes · bags · accessories</small> | | |
| BRIDGE 'WIDOWS' ACTIVITIES | | | | |
| Get Together Non-Bridge Playing Partners | Apartment 3204 Air on Broadbeach | | | |
| Following Get Together Above Hosted Expedition Mt Tambourine and Skywalk Cost \$20 p.p. for return bus | Depart Apartment 3204 & Grnd Floor Lobby Air on Broadbeach | | | |
| Unhosted Excursion Currumbin Wildlife Sanctuary Cost \$10 p.p. for return bus | Depart Ground Floor Air on Broadbeach | Depart 11am Pickup 4:30pm |  | |
| Hosted Bridge Widows Expedition Byron Bay Cost \$20.00 p.p. for return bus | Depart Ground Floor Air on Broadbeach |  | Depart 10:45am return 4:30pm | |
| Sanctuary Cove Lunch | Depart Ground Floor Air on Broadbeach |  | Depart 11am return 4:30pm | |
| All Golf Enquiries to Ian Wright 0417194347 • ian83@me.com | | Wednesday 26th February | Thursday 27th February | Friday 28th February |

GOLD COAST CONGRESS 2020

| | Wednesday 26th February | Thursday 27th February | Friday 28th February | Saturday 29th February |
|---|------------------------------------|-------------------------------------|--------------------------------------|---------------------------|
| OPEN EVENTS | | | | |
| Open Pairs Championship | | | O/F Teams S/F Teams | Finals Teams |
| Open Teams (**incl. Women's and Seniors') | 10:30am Start 4 x 14 Brds R5-R8 | 10:30am Start 4 x 14 Brds R9-R12 | 9:00am 2:00pm 2x12 Brds 3x12 Brds | 9:00am 4x12 Brds |
| Weekend Matchpoint Swiss Pairs | | | | |
| Monday Butler Swiss Pairs | | | | |
| Ivy Dahler Open Butler Swiss Pairs | | | 10:00am 1/3 2:00pm 2/3 | 10:00am 3/3 |
| Seres/McMahon Matchpoint Swiss Pairs | | | 10:00am 1/2 2:00pm 2/2 | |
| WOMEN'S and SENIORS EVENTS | | | | |
| ** Seniors Teams Final (top 2 from Open after Match 12) | | | 10:00am Start 4x12 Brds Final | |
| ** Women's Teams Final (top 2 from Open after Match 12) | | | 10:00am Start 4x12 Brds Final | |
| INTERMEDIATE EVENTS (Under 750MPs) | | | | |
| Intermediate Pairs Championship | | | | |
| Intermediate Teams | 10:30am Start 4 x 14 Brds R5-R8 | 10:30am Start 4 x 14 Brds R9-R12 | 10:00am Start 4x12 Brds Final | |
| Ivy Dahler Intermediate Butler Swiss Pairs | | | 10:00am 1/3 2:00pm 2/3 | 10:00am 3/3 |
| RESTRICTED EVENTS (Under 300MPs) | | | | |
| Restricted Pairs Championship | | | | |
| Restricted Teams | 10:30am Start 4 x 14 Brds R5-R8 | 10:30am Start 4 x 14 Brds R9-R12 | 10:00am Start 4x12 Brds Final | |
| Ivy Dahler Restricted Butler Swiss Pairs | | | 10:00am 1/3 2:00pm 2/3 | 10:00am 3/3 |
| NOVICE EVENTS (Under 100MPs) | | | | |
| Novice Pairs Championship | | | | |
| Novice Teams | 10:30am Start 4 x 14 Brds R5-R8 | 10:30am Start 4 x 14 Brds R9-R12 | 10:00am Start 4x12 Brds Final | |
| Friday Novice Pairs | | | 10:00am 1/2 2:00pm 2/2 | |
| 0-500MP EVENTS | | | | |
| Weekend Matchpoint Swiss Pairs U500 | | | | |
| Monday Butler Swiss Pairs U500 | | | | |
| ROOKIE PAIRS (Under 10MPs) | | | | |
| Rookie Pairs - Single Session Events | | 10:30am 1/1 | | |
| 0-50MP PAIRS | | | | |
| 0-50 Masterpoint Pairs | 10:30am 1/2 3:00pm 2/2 | 10:30am 1/2 3:00pm 2/2 | | |
| WALK-IN PAIRS | | | | |
| Walk-in Pairs (No Frills only on Friday 21st Feb) | 10:30am 3:00pm | 10:30am 3:00pm | 10:00am 2:00pm | 10:00am |
| | Wednesday 26th | Thursday 27th | Friday 28th | Saturday 29th |

**Dinner
Dance
7:00pm
for
Drinks**

**7:30pm
Start**

**Bookings
Essential**

A popular climax to the week. Attendees will be invited to register for this event during the week. The cost will be \$20 to anyone who played in an event (walk-ins not included) and \$50 otherwise.

Strong support from the bridge community has assisted 2800 children get back to school in the last financial year. These children have come to Zephyr Education Inc through the 104 shelters and associated organisations Zephyr supports.

At the time of writing this, we are very much aware that Australia is being devastated by terrible fires and there are many, many Australians in dire need. Any help you can provide to assist children affected by domestic violence to get on with their education is greatly appreciated. This wholly volunteer charity receives no government funding and has been operating for almost 7 years.

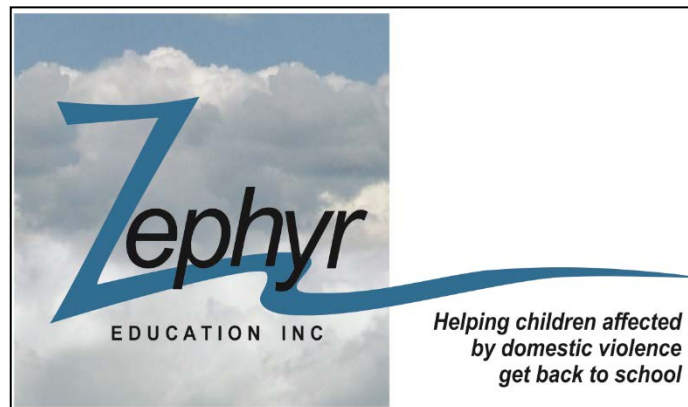
All donations over \$2 are tax deductible. Details for donations are as follows:

Zephyr Education Inc BSB: 084-004 Account number: 15-629-0526

Ref: Your name and please email your contact details to admin@zephyreducation.com.au so we can send you a receipt. You can find out more about Zephyr Education at www.zephyreducation.com.au

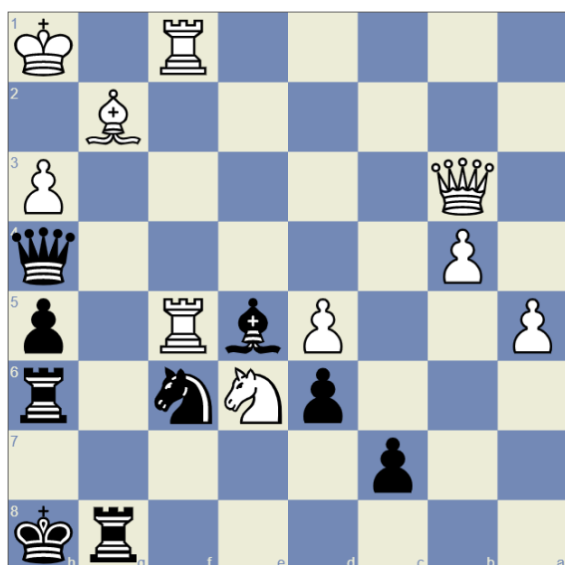
In past years collection boxes have been passed about and volunteers have stood at the doors while you're trying to find your seats to start play. Zephyr is massively appreciative of your support but also concerned not to interfere too much with your enjoyment of this wonderful congress.

To that end, this year there will be donation flyers available at the reception desk and on the table near our banner, with collection boxes in fixed locations. In this way you can make donations at a time most suitable to you. Carmel Martin has an eftpos machine available for the many supporters who make their yearly donation at this congress.



SOLUTION TO YESTERDAY'S CHESS PROBLEM

SOLUTION TO YESTERDAY'S SUDOKU [TOUGH]

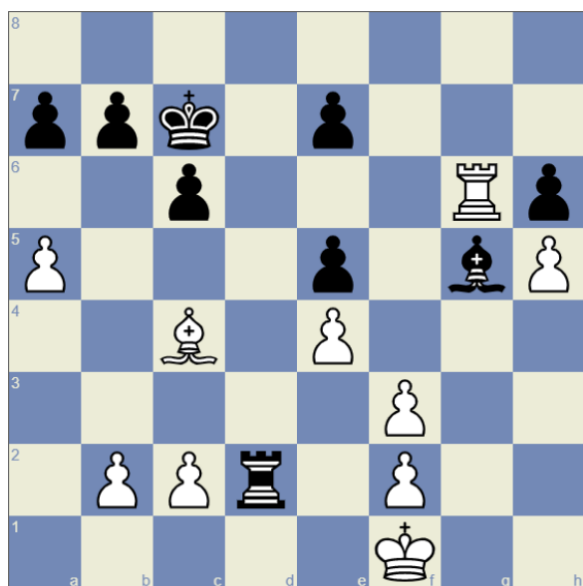


Black to move and win

1. a5 (white) Rxg2
2. Kxg2 Rg6+
3. Kh1 Rg3
4. Qa2 Qxh3+
5. Qh2 Rg1+
6. Kxg1 Qxh2#

| | | | | | | | | |
|---|---|---|---|---|---|---|---|---|
| 3 | 6 | 4 | 9 | 2 | 7 | 5 | 8 | 1 |
| 1 | 2 | 9 | 4 | 5 | 8 | 6 | 3 | 7 |
| 5 | 8 | 7 | 1 | 3 | 6 | 2 | 9 | 4 |
| 6 | 3 | 8 | 5 | 7 | 4 | 9 | 1 | 2 |
| 7 | 9 | 1 | 6 | 8 | 2 | 4 | 5 | 3 |
| 2 | 4 | 5 | 3 | 9 | 1 | 7 | 6 | 8 |
| 4 | 5 | 2 | 8 | 6 | 3 | 1 | 7 | 9 |
| 8 | 1 | 6 | 7 | 4 | 9 | 3 | 2 | 5 |
| 9 | 7 | 3 | 2 | 1 | 5 | 8 | 4 | 6 |

TODAY'S CHESS PROBLEM



White to move and win

Solutions in the next bulletin issue

TODAY'S SUDOKU [MEDIUM]

| | | | | | | | | |
|---|---|---|---|---|---|---|---|---|
| 6 | 3 | | | 7 | | | 1 | 2 |
| | | 9 | | | | 4 | | |
| | | 8 | 3 | | 4 | 5 | | |
| 9 | | | | 1 | | | | 6 |
| | | | 7 | | 5 | | | |
| 8 | | | | 4 | | | | 9 |
| | | 7 | 1 | | 2 | 6 | | |
| | | 1 | | | | 9 | | |
| 3 | 4 | | | 5 | | | 2 | 8 |