



Bulletin Editor: Andy Hung ♦ Co-Editors: Barry Rigal, Brent Manley
 Contributions to andygccbulletin@gmail.com or 0425-101-094

WELCOME TO THE 59TH GOLD COAST CONGRESS



Winners of the Bobby Richman Open Pairs Qualifying

N/S: Will Jenner-O'Shea (Sydney) and Mike Doecke (Adelaide)

E/W: Noah Apteker (South Africa) and Rob Stephens (South Africa)

The top 14 pairs in each direction will advance to the Final A. The next 14 to Final B, etc.

Today's Celebrity Speaker talk: 9:30am – 10:15am
 Joan Butts on "Major Suit Raises – a vital decision"

TODAY'S SCHEDULE

Sunday 23rd Feb

10:30am	Pairs (O, I, Re, N) Final 1/3 Weekend M/P (O, 0-500) Session 2/3 Rookie Pairs
3:00pm	Pairs (O, I, Re, N) Final 2/3 Weekend M/P (O, 0-500) Session 3/3 Walk-In Pairs
<i>O=Open, I=Intermediate, Re=Restricted, N=Novice</i>	

OPEN PAIRS QUALIFYING ROUND ONE

Barry Rigal

In the early part of the qualifier my target is to try to cover as many pairs as I can, keeping an eye out for faces I recognise, and hoping to get lucky with a story or two. So I watched at nine different tables, waiting for inspiration to strike me or the players.

Board one showed a standard matchpoint conundrum in the bidding and play.

Dealer: North	♠ A J 4	West	North	East	South
Vul: None	♥ 10 6 5				
Brd 1	♦ 10 8 6 2				
<i>Pairs Q1</i>	♣ A K Q				
♠ K 10 6 5 3					
♥ Q 9					
♦ 7 3					
♣ 6 5 4 2					
	♠ Q				
	♥ K J 7 3				
	♦ Q 9 5				
	♣ J 10 8 7 3				

Makeable Contracts				
W	N	E	S	
-	2	-	2	NT
2	-	2	-	♠
-	1	-	1	♥
-	1	-	1	♦
-	2	-	2	♣

When Michael Courtney opened a 14-16 no-trump as North, East would have liked to come in to show diamonds and a major, or both majors – either approach would be fine by me. Instead the East player passed and heard a Stayman auction come up empty and her LHO, Sue Ingham, invite game, rejected by Courtney.

Now even though declarer rates to have minors and dummy majors, it is surely right to lead a top diamond and have a look. If you are going to lead a major, try not to give away a trick – and ace-fourth is in my opinion the single worst lead from length into a strong hand that there is. 987x may be passive...but what is wrong with that? At pairs try to avoid giving away tricks against no-trump on blind leads.

When East led a low heart West passed the first test by putting up the queen, but did not find the shift to ♠K, instead continuing hearts. So Courtney came to five clubs, two hearts and two spades for +150 and an 88% result. After a top diamond lead and spade shift declarer will be struggling to take eight tricks. And after an initial spade lead quite a few pairs went down in 1NT.

Dealer: South	♠ K 3 2	West	North	East	South
Vul: E-W	♥ Q J 7 2				
Brd 3	♦ ---				
<i>Pairs Q1</i>	♣ A K Q 10 9 5				
♠ J 8 5					
♥ 8 6 4					
♦ K 10 6 5 4					
♣ J 8					
	♠ A 9 7 6 4				
	♥ A 10 3				
	♦ 7 3 2				
	♣ 4 2				

Makeable Contracts				
W	N	E	S	
-	2	-	2	NT
-	6	-	6	♠
-	6	-	6	♥
-	1	-	1	♦
-	6	-	6	♣

What is the most times as an opponent that you have balanced from partscore and then seen the opponents bid game? How about slam? On board 3 Courtney saw Ingham open 2♠ -- might be five and weak at the vulnerability. Since Courtney had seen his partner come in at unfavourable vulnerability over a strong no-trump on the previous deal with six to the ♥QJ10 and a queen, he can hardly be blamed for passing here. Now his LHO balanced, RHO bid 3♦ and he tried 3♠, then bid 4♠ when 4♦ came back to him,

Ingham ruffed the diamond lead and tried ♥Q covered all round. She ruffed a second diamond, unblocked ♠K crossed to the ♥10 and drew another round of trumps, then discarded her last diamond on the clubs. 12 tricks made and a 78% score – and yes, E/W were going for 800 in 4♦. Congratulations (I think) to Fryda/Hudson for bidding 6♣ – certainly not a terrible spot.

Dealer: South
 Vul: None
 Brd 11
Pairs Q1
 ♠ 9 8 6 2
 ♥ K 4 2
 ♦ J 9 3
 ♣ 5 4 2

♠ K 10 4 3
 ♥ 8 7 6
 ♦ K 6 5
 ♣ Q 9 3
 ♠ A 7 5
 ♥ A 9 5 3
 ♦ Q 10 2
 ♣ J 10 7

♠ Q J
 ♥ Q J 10
 ♦ A 8 7 4
 ♣ A K 8 6

West	North	East	South
		Li	A. Apteker
Pass	Pass	1NT	Pass
			All Pass

Makeable Contracts				
W	N	E	S	
-	1	-	1	NT
-	1	-	1	♠
-	1	-	1	♥
1	-	1	-	♦
-	-	-	-	♣

Jumin Li opened a strong no-trump and played there. Mindful of my Philippias above, Alon Apteker led the club jack, and continued the suit when declarer ducked. The ten was overtaken by the queen and declarer led a low diamond towards the dummy. Apteker took some time on this trick; eventually he won the ♦Q, which I suspect is not best in theory, and continued clubs. Declarer won and led the ♥Q; continuing the passive defence, Apteker won and played back a heart. Li won in dummy, playing the ♥10 from hand, and advanced the ♦J, covered all round, then played a third diamond.

At this point South knows declarer has shown 14 HCP outside of spades, and is known to have seven red-suit cards. While there is room for the spade king, I suspect it is right to try to cash out spades for fear a position like this exists. When Apteker exited in hearts again, declarer finally had his seven winners to cash. That was an 80% result for E/W; down one is 62% for N/S.

Li scored a goal on the next deal as well.

Dealer: West
 Vul: N-S
 Brd 12
Pairs Q1
 ♠ 10 4 2
 ♥ K 10 8 7 3
 ♦ Q 2
 ♣ J 8 5

♠ 9 8 7 5
 ♥ J 6
 ♦ 9 8 5 4
 ♣ A 10 9
 ♠ A K Q J 6
 ♥ Q 5 4
 ♦ A 10 7
 ♣ K 3

♠ 3
 ♥ A 9 2
 ♦ K J 6 3
 ♣ Q 7 6 4 2

West	North	East	South
------	-------	------	-------

Makeable Contracts				
W	N	E	S	
-	2	-	2	NT
-	3	-	3	♠
2	-	2	-	♥
-	2	-	2	♦
2	-	2	-	♣

In third seat he opened a natural 1♦ for the lead, his opponents still got to 4♠ but when Peter Jeffery led the ♦Q the defence had an easy route to four tricks. After a 1♣ opener and a club lead instead, declarer suddenly has a tenth winner. Notice that 3NT can be beaten if South is declarer but only at double-dummy on the lead of the ♣J. In practice if West gets hearts into play he will surely lead hearts or clubs (if his partner has bid them) so the contract is sure to make. Indeed, it occasionally came home with an overtrick.

Dealer: East
 Vul: None
 Brd 14
Pairs Q1
 ♠ K 6 5 4
 ♥ Q
 ♦ A 9 8 4
 ♣ A 8 6 5

♠ A 10 8 7
 ♥ K 10 9 7 5
 ♦ J 10 3
 ♣ Q
 ♠ Q J 9 2
 ♥ J 6 3 2
 ♦ K 7
 ♣ K 10 3

♠ 3
 ♥ A 8 4
 ♦ Q 6 5 2
 ♣ J 9 7 4 2

West	North	East	South
------	-------	------	-------

Makeable Contracts				
W	N	E	S	
-	2	-	2	NT
-	3	-	3	♠
-	2	-	2	♥
2	-	2	-	♦
3	-	3	-	♣

How many defenders do you expect to have got the defence right to a heart partscore here? Defending, say, 3♥ after P-P-1♦-1♥-3♦-3♥, East leads his singleton spade. When dummy puts up the queen West might elect to cover to keep declarer off dummy, but at the table I was watching West played low. David Weston led a trump

to the queen, king and ace, and now all East has to do is lead a low diamond. Declarer will probably duck but West wins the ♦A, gives his partner the spade ruff, and gets in with the ♣A for the second ruff. Down one, thank you very much. Alas at the table I was watching East shifted to a 'helpful' ♦Q – not the right moment for this manoeuvre since if you shift to a low diamond and partner has the ♦AJ he will put in the jack anyway. When West tried to cash his partner's ♦J, all the ruffs had got away.

With 227 results on each deal 8 pairs brought home +200 somehow, 12 pairs made +170, while a quarter of the field set heart partscores or games, some holding declarer to seven tricks when he misguessed diamonds.

Dealer: South
Vul: N-S
Brd 15
Pairs Q1
♠ Q 7 3
♥ 10 7 4
♦ A 7 5 3
♣ 8 7 6

♠ K J 4 2
♥ J 9
♦ Q 9 4 2
♣ K 4 2

♠ 5
♥ A K 6 5 3
♦ K J 6
♣ Q 9 5 3

♠ A 10 9 8 6
♥ Q 8 2
♦ 10 8
♣ A J 10

West North East South

Makeable Contracts				
W	N	E	S	
-	1	-	1	NT
-	1	-	1	♠
-	2	-	2	♥
-	2	-	2	♦
-	3	-	2	♣

Pairs is all about protecting the plus score. Don't push to marginal games; if partner makes the overtricks when game is close, he rates to score well. This deal emphasised two different approaches and how well they did.

When Weston held the North cards after 1♥-1♠-2♣ he tried 2NT, and was raised to game. After a spade lead (the ♠8) to the queen and king he had two aces and four spades to lose. Peter Buchen – facing a forcing 2♣ rebid, settled for only 2♥ and George Smolanko was treated to a MUD heart lead – unlucky but simply playing MUD means you deserve a bottom anyway...He put in the nine of course and took East's queen to lead a spade to the jack and ace. East probably does best to go passive and return a major suit. But she tried an active ♦8. Smolanko unblocked the ♦K from hand, won the second diamond, unblocked trumps and ruffed a spade to hand. He could draw trumps and discard two losing clubs on the diamond and spade winners for +170.

For the record, Valentine/Mortess were the sole pair who brought home 4♥. Stolidly collecting +170 was still a 92% result. But if the defenders don't help you, and lead clubs early, restricting you to +110 in 2♥, you still score better than average. Moral: don't go chasing rainbows.

Buchen did well here too.

Dealer: East
Vul: N-S
Brd 18
Pairs Q1
♠ A J 6
♥ K
♦ Q 10 8 7 6
♣ A 9 8 3

♠ Q 4 2
♥ A Q 9 3
♦ J 5 4 3
♣ 10 2

♠ 10 5 3
♥ J 10 6 5 4 2
♦ ---
♣ K J 6 5

♠ K 9 8 7
♥ 8 7
♦ A K 9 2
♣ Q 7 4

West North East South
Bollycote Buchen Weaver Smolanko
2♥ 2NT(♥) Pass 3♥
4♦ All Pass

Makeable Contracts				
W	N	E	S	
1	-	1	-	NT
3	-	4	-	♠
-	3	-	3	♥
5	-	5	-	♦
3	-	3	-	♣

Smolanko led a low heart and Buchen took his ace and returned a small heart so as not to give away the location of the ♥Q. Declarer ruffed, tried a diamond to hand to find the bad news, then finessed the ♠J. Buchen won his ♠Q and returned the suit, and now declarer should have known the ♣K was wrong – what did South have, given that he didn't have more than one minor heart honour? Best is to lead a club from dummy to the seven. Then you can draw trumps and advance the ♣Q to pin the ten – a classic example of an intra-finesse.

When declarer actually played ace and another club after winning ♠A, Smolanko cashed his master club to let Buchen pitch his third spade and gave his partner the spade ruff for two down.

This board did not show the field in a good light. Had East simply drawn trumps and cashed winners, losing two clubs and one trick in each major, for down one, that would have earned him a whopping 65% board! Yes, a sizeable percentage of the field right-sided 3NT when South supinely passed 1♦. But you ought to be able to stay out of game after the opponents warn you about the heart danger, I think.

Dealer: South
 Vul: E-W
 Brd 19
Pairs Q1
 ♠ A 9 2
 ♥ 10 5 2
 ♦ 5 4 3
 ♣ 10 9 5 3

♠ K 8 7 5
 ♥ Q 3
 ♦ A J 8 7
 ♣ K Q J

 ♠ J 6 4 3
 ♥ A K 8
 ♦ K 6
 ♣ A 7 6 4

♠ Q 10
 ♥ J 9 7 6 4
 ♦ Q 10 9 2
 ♣ 8 2

West North East South

Makeable Contracts				
W	N	E	S	
-	5	-	5	NT
-	5	-	5	♠
-	3	-	3	♥
-	4	-	4	♦
-	5	-	5	♣

This proved a highly dangerous deal for the field. After a strong no-trump, if North uses Stayman and finds the spade fit, many would decide they could take control of the auction and use Blackwood. But 5♠ is far from safe...why not consult partner by setting spades as trump and showing slam interest?

If you use a method the Americans call Baze, then after Stayman finds a fit, use a direct jump to 4NT as quantitative without a fit. Three of the other major sets trumps and shows a singleton somewhere – opener can ask, or do something else intelligent. 4♣ shows a balanced slam try and 4♦ is Keycard. You can shuffle round these responses if you like; whatever you do is better than guessing.

When Sartaj Hans opened the South hand a 14-16 no-trump, Marty Fleisher won his side the lion's share of MP by simply jumping to 3NT. Even after a diamond lead one can take 11 tricks; Hans received a spade lead and had no trouble coming home with 460 for an 85% score.

Dealer: North
 Vul: N-S
 Brd 21
Pairs Q1
 ♠ K 9
 ♥ 6 5 4
 ♦ K 3 2
 ♣ A J 8 5 2

♠ J 10 7 4
 ♥ Q 8 3
 ♦ 9 7 6 5
 ♣ 10 9

 ♠ A Q 8 6 3 2
 ♥ A K J 2
 ♦ 10 4
 ♣ Q

♠ 5
 ♥ 10 9 7
 ♦ A Q J 8
 ♣ K 7 6 4 3

West North East South

Makeable Contracts				
W	N	E	S	
2	-	2	-	NT
-	3	-	3	♠
-	1	-	1	♥
3	-	3	-	♦
3	-	3	-	♣

Cui Culpa here? I watched David Weston and Julian Foster as N/S here, and when Foster opened 1♠ in third seat it was passed round to East, who doubled. Foster rebid 2♥, and now when West bid 3♣ Weston bid 3♠, and East bid 4♣. So far so good – that is actually par on the hand. But when Foster bid 4♠, that came around to East who saved in 5♣, turning +100 into -300 and a 70% board became a 9% result.

It is easy to blame East for taking a unilateral position. But that decision could so easily have been reasonable if West's spade king were the ♣Q. No, I blame West for failing to double 4♠. With a soft defensive spade trick it is up to you to take the decision for the partnership. You do not expect partner to save; equally you do not expect 4♠ to make and so doubling kills two birds with one stone. It stops partner doing something silly and improves your expected result.

Dealer: South
 Vul: None
 Brd 27
Pairs Q1
 ♠ A K 10 6
 ♥ A Q 9 3
 ♦ A 3 2
 ♣ 9 2

 ♠ 9 5 4 2
 ♥ 6
 ♦ Q 10 9 7 5 4
 ♣ 10 8

♠ Q 3
 ♥ J 5 4 2
 ♦ K
 ♣ A Q J 6 5 3

♠ J 8 7
 ♥ K 10 8 7
 ♦ J 8 6
 ♣ K 7 4

West North East South

Makeable Contracts				
W	N	E	S	
4	-	4	-	NT
4	-	4	-	♠
4	-	4	-	♥
2	-	2	-	♦
1	-	1	-	♣

This was a testing declarer play problem for Pauline Gumby, made more difficult by both the opening lead and subsequent false carding.

Lazer/Gumby as E/W bid 1♣-1♥-3♥-4♥ and Bill Nash led the ♦7, which certainly didn't make declarer's task of identifying length or shortage any easier. Wallis won the ♦K – which could easily have been a false-card if he could identify his partner's lead from weakness, and shifted to ♣A, ♣J. Gumby won and took a long time to play to trick three. What would you recommend now? At the table Gumby drew two rounds of trumps with the ♥AQ and now could no longer take her club ruff and draw trumps. When she came to hand on a third trump to finesse spades Wallis played a fourth trump and that left declarer with an inevitable minor-suit loser.

One possibility would have been to take a club ruff at trick three, but you are still faced with the problem of losing control if you draw trumps now, and you still have the ♠Q to knock out. Best might be to finesse spades at trick four, by leading to the 10. When North wins and returns a spade you win the jack, ruff a club, and draw trumps via the marked finesse, with spades ready to run. If the spade finesse holds life is more complex. As the cards lie you can draw trump and test spades, then endplay South with the fourth spade to lead diamonds. But that is by no means a likely lie of the cards to play for.

Half a top rode on making that tenth trick; N/S finished with a 33% result instead of an 85% score.



StepBridge
The Australian Internet Bridge Club

Get 5 free tournaments

Masterpoints awarded with ABF

Low table fees

Nine tournaments weekly, Two red per month

CONTACT US
admin@stepbridge.com.au


LOOK US UP
www.stepbridge.com.au

WHEREVER YOU ARE, WE'RE HERE FOR YOU!
At home in pyjamas, in large towns and small, the city or outback, on holidays or abroad you can still play with your partner and friends.

As well as 9 Masterpointed tournaments each week, we offer unlimited social games 24/7 if you get a table together. Ideal for clubs, practicing for team events or just partnership practice.

Most of our players are members of bridge clubs all round Australia and we invite you to join us too, spread the word and spread the bridge.

JOIN UP & CHECK US OUT!



Paul Lavings Bridgegear
paul@bridgegear.com (02) 4295 0870

CLUB SUPPLIES NEW & 2nd HAND BOOKS CDs & DVDs Giftware & Antiques

COME AND VISIT HELEN AND PAUL AT OUR STALL

LATEST NEW BOOKS

Gaining the Mental Edge by Kim Frazer	\$34.95
Planning the Defense by Seagram/Bird	\$34.95
Insights on Bridge by Mike Lawrence	\$29.95
Defense on the Other Hand by Bird/Cohen	\$33.95
Bridging Two Worlds by Martin Hoffman	\$37.95

NEW GIFTWARE

Hand Towels, white and fluffy with suit symbols	\$10.00
Pen Sets, enamel four pens with own suit symbol	\$20.00

Plus boxer shorts, umbrellas, scarves, socks, visors, shoulder bags, jewellery, mouse pads, slant pads and much more. Complete set of card holders and home bridge supplies.

Paul 0408 888 085 Helen 0418 144 534 Office 02 4295 0870
EMAIL paul@bridgegear.com WEBSITE www.bridgegear.com



Could you imagine a "tv show" about bridge?

It's happening every lunchtime. You might like to check out [twitch.tv/v8mama](https://www.twitch.tv/v8mama) to watch her (Vanessa Brown) play bridge with viewers who drop in to play. Many viewers from around the world drop in to just say hi, ask questions or give advice in a very relaxed sociable friendly afternoon of bridge. v8mama is an experienced Sydney based player, who loves to encourage people of all levels to share their passion for the game and help each other with bidding and play advice.

Twitch is an interactive platform to watch, join in the play or chat with others. You can do this from your own computer, tablet or phone just by going to [twitch.tv/v8mama](https://www.twitch.tv/v8mama). If watching isn't enough, I encourage you to come and say hi, by simply registering with twitch (give yourself a fun name - maybe your favourite cake or playing card!) for FREE. v8mama streams every day at 12:30pm for 3 hours except when she's competing at national bridge events. Come along and be part of the fun!



Barrier Reef Congress



**VENUE—St Ursula's College,
Queen Street, Yeppoon**

**Friday 1 May to Monday
4 May, 2020**

**Hosted by
Yeppoon
Bridge Club Inc**

*An ABF Approved Gold
Point Event*

Information and nomination - see websites:-

**QBA - [http://www.qldbridge.com.au/brc/yeppoon/
index.php](http://www.qldbridge.com.au/brc/yeppoon/index.php) or**

YBC - <http://www.yeppoonbridgeclub.com/BRC.html>

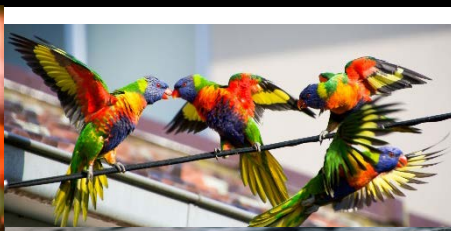
**Queries or assistance - contact the Yeppoon Bridge Club
by Email at brc@yeppoonbridgeclub.com**

HIDEAWAY

KITCHEN & BAR

DRESS UP THEME DAY (WEDNESDAY MORNING AND AFTERNOON TEAMS SESSIONS)

Feathers to Fauna PRIZES FOR THE BEST DRESSED GROUP IN THE “Feathers to Fauna”



We encourage all players to dress in keeping with the Gold Coast Annual Theme for Wednesday Teams Sessions. The theme is “Feathers to Fauna” – make of it what you will! The photography will commence during the break between the morning sets, and will continue on during the lunch break on Wednesday 26th February. Prizes will be available for some combination of groups, pairs or individuals.

DAY ONE



RESTRICTED PAIRS QUALIFYING ROUND ONE

New Zealand partners show promise in Restricted Pairs

Brent Manley

The Gold Coast Congress attracts lots of players who are relatively new to tournament bridge, in large measure because the organisers make sure they have as much fun as those who have played bridge for longer and at higher levels.

On Saturday, a pair from Christchurch, New Zealand – Jan Stupples and Robin Findlay – played together in a tournament for the first time. Findlay and Stupples met at a bridge club about four years ago when Findlay went for lessons at the urging of her sister, a bridge player.

The 10-week bridge course Findlay took started with duplicate. “I got hooked,” she says. On Saturday, the two players demonstrated that although they may not be ready to execute a backwash squeeze or other esoteric play, they have the partnership part of the game down pat.

There were a few hiccups along the way for the two, but there was never a cross word and the mutual respect and support were evident as they fashioned a 45.23% game, respectable for a pair making their tournament debut.



Jan Stupples and Robin Findlay

The first two boards, starting with 16, didn't help their scores, but they bounced back with a near top on board 18.

Dealer: East
Vul: N-S
Brd 18
Pairs Q1

♠ Q 4 2
♥ A Q 9 3
♦ J 5 4 3
♣ 10 2

♠ A J 6
♥ K
♦ Q 10 8 7 6
♣ A 9 8 3

♠ 10 5 3
♥ J 10 6 5 4 2
♦ ---
♣ K J 6 5

♠ K 9 8 7
♥ 8 7
♦ A K 9 2
♣ Q 7 4

West	North	East	South
	Stupples		Findlay
		1NT	Pass
3NT	All Pass		

Makeable Contracts				
W	N	E	S	
1	-	1	-	NT
3	-	4	-	♠
-	3	-	3	♥
5	-	5	-	♦
3	-	3	-	♣

Some players in the South seat might start with the ♥J, but there is a chance the suit could become blocked if North has too many high spot cards in the suit.

Findlay avoided that danger by starting with the ♥2 to the king and ace, followed by the ♥Q. When Stupples continued with the ♥9, Findlay overtook with the ♥J and cashed the rest of the suit. The result was plus 150 for Stupples and Findlay, good for 90% of the matchpoints on that deal.

The next two scores were a bit disappointing for Stupples and Findlay. On this one, they bid aggressively to 4♠, which is basically a 50% proposition.

Dealer: North
Vul: N-S
Brd 21

♠ J 10 7 4
♥ Q 8 3
♦ 9 7 6 5
♣ 10 9

♠ K 9
♥ 6 5 4
♦ K 3 2
♣ A J 8 5 2

♠ A Q 8 6 3 2
♥ A K J 2
♦ 10 4
♣ Q

♠ 5
♥ 10 9 7
♦ A Q J 8
♣ K 7 6 4 3

West	North	East	South
	Stupples		Findlay
	Pass	Pass	1♠
2♣	2♠	4♣	4♠
All Pass			

Makeable Contracts				
W	N	E	S	
2	-	2	-	NT
-	3	-	3	♠
-	1	-	1	♥
3	-	3	-	♦
3	-	3	-	♣

If East has the ♠K, declarer has 10 easy tricks, but things didn't work out for Findlay.

West led a low diamond, taken by East with the ace. East continued with a low club to declarer's queen and West's ace. West cashed the ♦K and played another diamond, ruffed by Findlay.

She entered dummy with a heart to the queen and ran the ♠J. When West produced the king, that was it for declarer. Stupples and Findlay received 22% for minus 100.

The next deal was also disappointing, but Stupples and Findlay rebounded with a 90% score when one of their opponents went three off in 3♥ for plus 150.

This board, the penultimate of the session, was worth 86% thanks to fine declarer play by Findlay, who took advantage of every opening from the defenders to bring home an overtrick in a 1NT contract.

Dealer: East	♠ 6 5 4	
Vul: Both	♥ J 5 4 3	
Brd 26	♦ 5 4 3	
<i>Pairs Q1</i>	♣ K 6 3	
♠ A K J 10		♠ 7
♥ A 8 6		♥ Q 9 7 2
♦ 10 6		♦ K J 9 8 2
♣ Q 8 7 2		♣ 9 5 4
	♠ Q 9 8 3 2	
	♥ K 10	
	♦ A Q 7	
	♣ A J 10	

West	North Stupples	East	South Findlay
		Pass	1NT
All Pass			

Makeable Contracts				
W	N	E	S	
1	-	1	-	NT
-	1	-	1	♠
1	-	1	-	♥
1	-	1	-	♦
1	-	1	-	♣

West started with the ♠A, continuing with the king and jack to set up her 10. Findlay won the ♠Q, thought things over briefly before putting the ♠8 on the table. West won with the ♠10 and played the ♦10. Findlay took East's king with the ace and put the ♣10 on the table, letting it ride when West followed low. The ♣A was next, followed by a club to the king and a diamond to the queen. She lost only a heart from there to finish with plus 90.

The final board of the session produced another good score for Stupples and Findlay.

Dealer: South	♠ Q 3	
Vul: None	♥ J 5 4 2	
Brd 27	♦ K	
<i>Pairs Q1</i>	♣ A Q J 6 5 3	
♠ A K 10 6		♠ J 8 7
♥ A Q 9 3		♥ K 10 8 7
♦ A 3 2		♦ J 8 6
♣ 9 2		♣ K 7 4
	♠ 9 5 4 2	
	♥ 6	
	♦ Q 10 9 7 5 4	
	♣ 10 8	

West	North Stupples	East	South Findlay
1NT	2♣	2NT	Pass
3NT	All Pass		Pass

Makeable Contracts				
W	N	E	S	
4	-	4	-	NT
4	-	4	-	♠
4	-	4	-	♥
2	-	2	-	♦
1	-	1	-	♣

Stupples started with the ♣Q, which held the trick, at which point Stupples smoothly continued with the ♣J. Again, declarer played low, a fatal move. The ♣A was next, followed by three (now good) clubs and Stupples got out with the ♦K. Declarer won the ♦A and could have held the damage to minus 100 by guessing right in hearts, but she played a heart to the king and another from dummy. When Findlay discarded on the second round of hearts, it was over for West. Plus 150 for Stupples and Findlay was good for an 88% score.

Reflecting on their first session together in a big tournament, the two viewed the future for themselves in bridge as a continuation of the learning process. Said Findlay: "We'll get better, that's for sure."

Youth Players

There is a get together for youth players (and ex-youth players too) tonight at Apartment 3204, Air on Broadbeach. Tim Runting has organised a hospitality get together with free snacks and drinks!

One of the younger players at the 2020 Gold Coast Congress?



Come to the 5th Annual Youth Bridge Fun Night at the Gold Coast Congress

FREE entry
FREE food
CASH prizes
GREAT youth director (Laura Ginnan)

Date: Tuesday 26 February 2020.

Time: 7 pm (food), 7.30 pm to 9:30 pm (bridge). Note congress bridge finishes that day at 6.30 pm.

Venue: Gold Coast Bridge Club (1.2 km, or 15 minutes walk, north of the GC Convention Centre).

Format: Some standard bridge, some "party" bridge

Age Limit: Youth & youth-ish players (up to 35 years) are welcome.

Interested? Please contact Andrew Gosney on 0450 574 841 or atgosey@hotmail.com



2883 Gold Coast Highway, Surfers
Paradise.
Tel: 5538 2925

When you know declarer has a 2-way finesse and you and your partner are trying to not give anything away



PLAY BRIDGE WITH BARRY

Barry Rigal



One of the right times to sacrifice your honours is when you want to try to encourage a continuation of the suit led - even at the apparent cost of a trick.

Dir: East
Vul: E/W

♠ A 6 5
♥ K J 10 5
♦ A 2
♣ J 10 4 3

♦5

	N	
W		E
	S	

♠ J 4
♥ Q 9 2
♦ K J 4
♣ A Q 9 8 5

West	North	East	South
		Pass	1♣
Pass	1♥	Dbl	2♥
Pass	3♣	Pass	4♣
Pass	5♣	All Pass	

Sitting South, you reach 5♣ (well done to avoid 3NT since a spade lead dooms you) West gives you a respite by leading ♦5.

Can you take advantage of this?

Solution:

Dir: East
Vul: E/W

♠ K 10 3 2
♥ 8 6 3
♦ 10 8 6 5
♣ K 6

	N	
W		E
	S	

♠ Q 9 8 7
♥ A 7 4
♦ Q 9 7 3
♣ 7 2

♠ J 4
♥ Q 9 2
♦ K J 4
♣ A Q 9 8 5

If you run the opening diamond lead to your hand, you set up an irrelevant discard for a spade from dummy, but tip off the opponents to the need for a switch.

Better to win the diamond ace and take the club finesse; unless East works out to discourage at trick one (and why should he?) West will continue diamonds, hoping for the spade switch from East, and he will be sorely disappointed.

You now have time to draw trumps and set up hearts to provide the discard that really matters, the spade from hand.

Sage

Cafe Restaurant



Award winning Sage Restaurant offers a simple and diverse menu, breakfast, lunch and dinner. Extremely tasty and prepared to perfection. You'll love the casual ambience and the excitement of being in the heart of Broadbeach. Enjoy pasta, pizza or steaks, it will not disappoint.

WELCOME TO NEW PLAYERS AT THE GCC

Brent Manley



Have You Discussed? Part 2 Essential Conventions

You have probably already filled out a convention card with your partner. It is a must, of course, if you are to have sensible auctions. In my mind, there are four essential conventions, starting with Stayman and Jacoby transfers. It's a safe bet that you have both on your convention card. If not, this article should be useful to you.

Just about everyone knows that a bid of 2♣ after partner opens 1NT (15-17) asks opener about four-card majors. Okay, but what about responses to Stayman? With no four-card major, it's easy: 2♦ says you don't have one.

What if you have both? If your agreement is to bid spades first, meaning you might still have four hearts, you might end up too high. Consider that responder holds ♠K J 9 ♥K J 7 5 ♦10 9 4 3 ♣5 3. After opener's 2♠ response and considering the weakness in clubs and the possibility opener has four hearts, responder will have to bid 2NT, invitational. If opener has four hearts and not enough to go to game while preferring a suit contract, she will bid 3♥, which might be too high.

If opener bids hearts first, responder can bid 2♠, showing the equivalent of a raise to 2NT with four cards in spades. With a minimum 1NT opener that has four spades, opener passes. Without four spades, opener bids 2NT. You get to stay at the two level.

The other benefit of this agreement is that when opener's response to Stayman is 2♠, responder knows opener does not have four hearts, so he can simply bid 2NT. Opener passes or bids on depending on her hand. It is important to discuss these points with your partner.

Here's another point to discuss: you open 1NT and partner bids 2♣. You have no four-card major so you bid 2♦. Partner now bids 2♠. What is going on? Many pairs agree that this is an invitational bid with five spades and four hearts.

Jacoby Transfers

If you are not using this convention, you will have problems with certain types of hands. It's easy to use: after partner opens 1NT, a bid of 2♦ shows at least five hearts; 2♥ shows at least five spades. Opener *must* accept the transfer (even with doubleton support only), after which responder's intentions will become clear.

With fewer than 8 HCP, responder will pass. With 8-9 HCP, responder can bid 2NT, inviting game with five of his major, or he can bid three of the major with six or more to invite game in the suit.

With game-going points (10+) and five of the major, responder bids 3NT, showing a five-card suit and giving opener the choice of games. With three or more of the transfer suit, opener bids game in the major. With only two, opener passes 3NT.

If responder has six or more of a major and 10 or more HCP, he transfers and bids game in the major. The 1NT opener will have at least two of responder's major, so the eight-card fit is assured.

If you do not use Jacoby Transfers, you will be in a quandary with five of a major and 8-9 HCP. If you bid two of the major, which is to play ("drop dead" in bridge parlance), opener will pass (you could have a really bad hand) and you could miss game when partner has 16 or 17 HCP and a fit for your suit.

Bidding three of the major over partner's 1NT is forcing to game, and it won't be fun if opener has a minimum hand with only two of the major. Opener will likely bid 3NT, which could be a terrible contract if the opponents have a suit to run. Jacoby Transfers help you avoid these dilemmas.

Ron Klinger



Dir: South	♠ 8 7 5 4	West	North	East	South
Vul: Nil	♥ K 7				1♠
	♦ K Q 3 2	Pass	2♦	Pass	2♠
You (W)	♣ K J 10	Pass	4♠	Pass	Pass
♠ Q J 10		Pass			
♥ 6 4 2					
♦ A 8 6 4					
♣ A 5 3					

N

W E

S

Lead: ♠Q

1. West leads the ♠Q: four – nine – ace.
2. South plays the ♠K: jack – five – ♥Q.
3. South leads out the ♦J: ace – two – ten.

Solution:

Dealer: South
Vul: Nil

♠ Q J 10	♠ 8 7 5 4	♠ 9
♥ 6 4 2	♥ K 7	♥ Q J 10 9 3
♦ A 8 6 4	♦ K Q 3 2	♦ 10 9 7 5
♣ A 5 3	♣ K J 10	♣ Q 9 7

♠ A K 6 3 2
♥ A 8 5
♦ J
♣ 8 6 4 2

This is confirmed by declarer's play of two rounds of trumps. If South had ♥A-x-x-x, South would win trick 1, play ♥K, ♥A, heart ruff, spade to hand and another heart ruff. To play ♠A, ♠K first, might allow an opponent to draw a third round of trumps when in with the ♦A or ♣A.

Should you switch to a low club at trick 4? Definitely not. South might wonder why you played a club, when East's ♥Q indicates a heart is safe, and come up with the right answer. Switch to a heart and let South guess clubs later.

'Even the best opponents should be given the chance to err.'
(Victor Mollo)

2020 Bridge Holidays with Ron & Suzie Klinger

Sunday-Sunday, August 2-9

Crystal Symphony Cruise

August 19 - September 1
Amsterdam to Barcelona,
visiting France, Portugal and Spain

Norfolk Island

Sunday to Sunday, October 25-November 1

Brochures available on request:

Tel: (02) 9958 5589

Email: suzie@ronklingerbridge.com



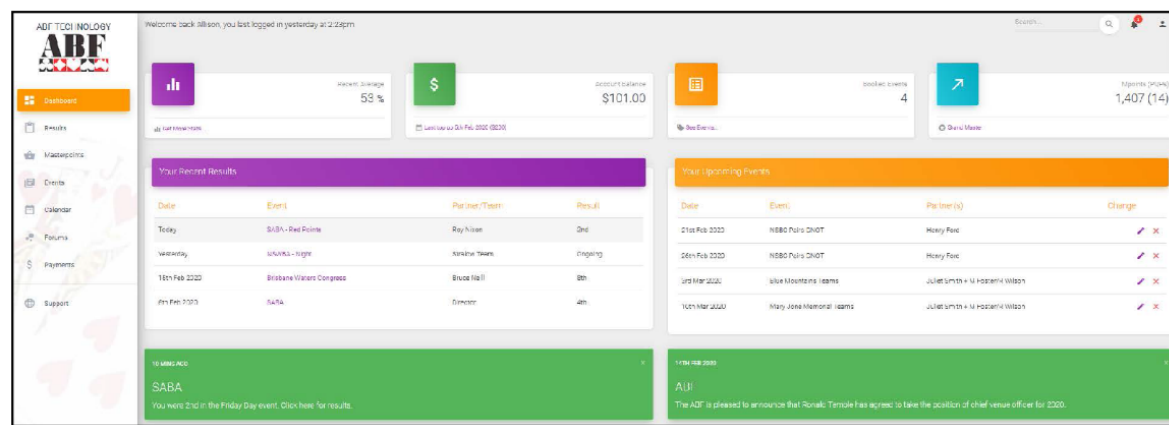
ABF Technology Update



When: Wednesday 26 February 2:15pm
Where: Rooms 10/11/12 (stairs across from Bridge Administration Office)
Who: Mark Guthrie & Julian Foster

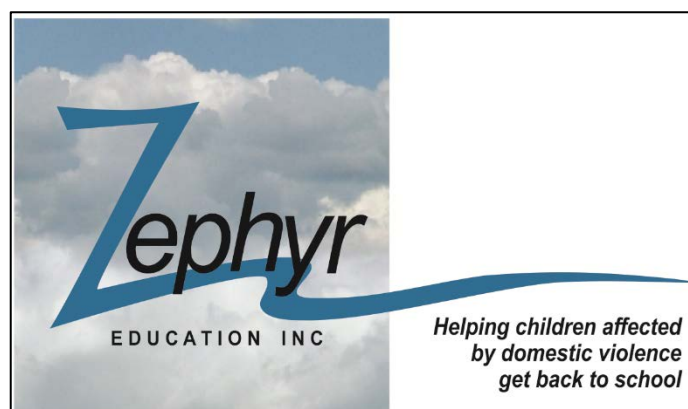
Come along and get an update on the ABF Technology Roadmap. See a prototype of the new systems and take the opportunity to ask questions. Feel free to bring your lunch.

All welcome (space allowing).



Strong support from the bridge community has assisted 2800 children get back to school in the last financial year. These children have come to Zephyr Education Inc through the 104 shelters and associated organisations Zephyr supports.

At the time of writing this, we are very much aware that Australia is being devastated by terrible fires and there are many, many Australians in dire need. Any help you can provide to assist children affected by domestic violence to get on with their education is greatly appreciated. This wholly volunteer charity receives no government funding and has been operating for almost 7 years.



All donations over \$2 are tax deductible. Details for donations are as follows:

Zephyr Education Inc BSB: 084-004 Account number: 15-629-0526

Ref: Your name and please email your contact details to admin@zephyreducation.com.au so we can send you a receipt. You can find out more about Zephyr Education at www.zephyreducation.com.au

In past years collection boxes have been passed about and volunteers have stood at the doors while you're trying to find your seats to start play. Zephyr is massively appreciative of your support but also concerned not to interfere too much with your enjoyment of this wonderful congress.

To that end, this year there will be donation flyers available at the reception desk and on the table near our banner, with collection boxes in fixed locations. In this way you can make donations at a time most suitable to you. Carmel Martin has an eftpos machine available for the many supporters who make their yearly donation at this congress.

ABF Travel Insurance



PLAY YOUR CARDS RIGHT

ABF ENDORSED
INSURANCE BROKERS

Exclusive Travel Insurance for Members, Families and Friends

“When do I need to buy Travel Insurance?”

✓ *The Moment you book your Trip*

**Talk to us right here at the GCC and
we'll give you all the ins and outs of the
ABF Members Travel Policy**

**IT'S OUR 10TH YEAR AT THE GCC – SO COME AND VISIT
THE TEAM AT OUR KIOSK IN THE FOYER ON THE 24TH TILL
THE 28TH OF FEBRUARY 2020.**

**Drop in and register to get a chance to spin Steve's
Prize Wheel *and* the Lucky Star to win Bridge gift
vouchers and a bunch of TBIB goodies.**

Don't miss out!

No Frills Friday Night Walk-in Pairs Tables 1-18 (truncated)

Place	N-S	Score	Place	E-W	Score
1	Ian Bailey - Peter Robinson	64.15	1	Terry Bodycote - Jenny Michael	58.90
2	Gill Blakey - Ross Blakey	61.35	2	David Sharman - Linda Baynham	55.59
3	Lynette O'shaughnessy - David O'shaughnessy	61.30	3	Jeff Lassman - Adrian Riepsamen	55.18
4	Hannah Fuzi - Shirley Bettman	53.68	4	Steven White - Frank Kovacs	52.80
5	Don Ganlath - Vadivelu Vasandakumar	53.47	5	Reeve Pring - Gillian Gonthier	52.34
6	Tom Burton - Richard Gibson	52.97	6	Rhonda Graham - Nick Edginton	52.11
7	William Van Bakel - Barbara Power	52.45	7	Ken Carmichael - Glenys Dean	51.91
8	Peter Gubanyi - Renee Gubanyi	50.06	8	Matt Raj Mal - Deborah Cooper	51.69
9	Pepe Schwegler - Peter Hill	49.60	9	Chris Glyde - Maria Casci	50.86

No Frills Friday Night Walk-in Pairs Tables 19-27

Place	N-S	Score	Place	E-W	Score
1	Dee Harley - Anna St Clair	71.99	1	Delores Graves - Suzanne Cole	54.40
2	Judith Roose-Driver - Johan Roose	63.19	2	Rae Moir - Jane Hills	52.78
3	Joanne Bakas - Tassi Georgiadis	52.08	3	Christine Parkin - Ian Wright	52.55
4	Annette Marshall - Freddie Zulfiqar	50.93	4	Jenny Reid - Dianne Dwyer	52.31
5	Jeanette Abrams - Linda Aubusson	50.69	5	Colin Saunders - Esther Saunders	50.46
6	Lyn Muller - Sarah Green	45.14	6	Sari Irlight - Louis Cukierman	47.92
7	Trish Clearwater - Sandy Buzzard	42.13	7	Craig Shannahan - Sue Solomons	47.45
8	Suzanne Smith - Gillian Robertson	41.44	8	Penny Bowen - Bill Bradshaw	46.99
9	Rita Van Lieshout - Hanna Majewski	32.41	9	Helen Walker - Kevin Walker	45.14

No Frills Friday Night Walk-in Pairs Tables 28-43 (truncated)

Place	N-S	Score	Place	E-W	Score
1	Colin Webb - Gayle Webb	58.02	1	Eva Shand - Les Varadi	59.38
2	Monica Ginsberg - Sybil Hurwitz	55.31	2	John Stuart - Deanna Stuart	59.14
2	Helen Rollond - Helen Kite	55.31	3	Hamish Mccracken - Phil Jacobsen	56.54
4	Lesley Millet - Ron Millet	54.57	4	Sylvia Billingham - Ian Hoschke	55.19
5	Pamela Lidl - Rudi Lidl	54.07	5	Alan Hamilton - June Glenn	52.35
6	Mary Tough - Chris Tough	51.73	6	Caroline Caseley - Sam Gurney	51.98
7	Max Holewa - Diane Holewa	51.60	7	Hans Van Weeren - John Rogers	49.14
8	Terry Driver - Michael Stoneman	51.23	8	Kathy Hamilton - John Hamilton	48.89
9	Elizabeth Black - Kitty George	51.11	9	Charles Page - Lorraine Zoia	48.64

Saturday AM Walk-in Pairs (truncated)

Place	N-S	Score	Place	E-W	Score
1	Deborah Cooper - Alan Geare	64.70	1	Chris Phippen - John Courtman	64.71
2	Paul Tyminski - Roger Thomas	64.06	2	John Masters - Nimal Weerasinghe	58.97
3	Speros Pappas - Andrea Pappas	56.42	3	Mick Fawcett - Lyn Tracey	57.50
4	Sarah Strickland - Jacquie Williams	56.17	4	Peter Jaffe - Barry Williams	56.83
5	Jill Blenkey - Jeff Conroy	53.96	5	Robin Webcke - Alan Currie	56.81
6	Jenny Johnstone - Dot Peacock	53.61	6	Pauline Erby - Gil Clarke	55.68
7	David Stent - Russell Reardon	52.84	7	Joy Wesslink - Anne Cummins	54.78
8	Arvind Bhasin - Geeta Bhasin	52.03	8	Nick Hullah - Bernard Yates	54.75
9	Val Roland - Michael Stoneman	51.84	9	Pamela Lidl - Rudi Lidl	53.70

Saturday PM Walk-in Pairs

Place	N-S	Score	Place	E-W	Score
1	Jenny Johnstone - Dot Peacock	59.52	1	Joy Wesslink - Anne Cummins	59.23
2	Nimal Weerasinghe - John Masters	53.27	2	Geeta Bhasin - Arvind Bhasin	54.46
3	Alan Currie - Robin Webcke	52.68	3	Colin Peardon - Norma Cameron	52.08
4	Sarah Strickland - David Tucker	50.60	4	Max Latimer - Jene Jones	50.30
5	Carol Rane - Daphne Van Nooten	50.30	5	Matthew Roberts - Robert Morton	49.11
6	Eddie Mullin - Dianne Mullin	50.00	6	Lesley Peek - Julie Forster	46.73
7	David Saunders - Tibor Toth	44.64	7	Chris Cottier - Pamela Rodwell	46.43
8	Pat Guy - Trevor Henderson	38.99	8	Jennie Tucker - Mary Doneley	41.67

OPEN PAIRS SCORES AFTER QUALIFYING - Leading Scores

	N/S 1-14 Final 15-28 Plate	S1	S2	Avg		E/W 1-14 Final 15-28 Plate	S1	S2	Avg
1	Will Jenner-O'Shea - Mike Doecke	65.12	66.66	65.89	1	Noah Apteker - Rob Stephens	56.68	70.22	63.45
2	Sartaj Hans - Marty Fleisher	66.04	65.63	65.84	2	Liam Milne - James Coutts	61.69	62.59	62.14
3	Peter Buchen - George Smolanko	61.68	59.91	60.80	3	Max Henbest - David Wiltshire	64.79	58.93	61.86
4	Marjorie Askew - William Powell	63.24	56.71	59.98	4	Giselle Mundell - Matt Smith	59.08	61.29	60.19
5	David Hoffman - Richard Brightling	60.37	58.49	59.43	5	Kismet Fung - Jeffrey Smith	63.99	56.27	60.13
6	Tony Marinos - Peter Grant	60.61	55.73	58.17	6	Robert Krochmalik - Paul Lavings	66.44	53.67	60.06
7	Paul Dalley - Kieran Dyke	57.89	58.01	57.95	7	Geo Tislevoll - Terje Lie	60.35	59.43	59.90
8	Philip Markey - Ron Klinger	55.41	59.55	57.48	8	Eva Caplan - Pablo Lambardi	62.97	55.07	59.02
9	Maurits Van Der Vlugt - Marshall Lewis	57.68	57.16	57.42	9	Yumin Li - Peter Jeffery	61.43	56.23	58.83
10	Sven-Ake Bjerregard - Alon Apteker	57.28	56.89	57.09	10	Matthew Brown - Andrew Spooner	58.26	58.96	58.61
11	Steven Bock - Les Grewcock	58.46	55.36	56.91	11	Simon Hinge - Jamie Thompson	56.91	59.59	58.25
12	Margaret Perley - Paul Freeland	59.42	54.20	56.81	12	Justin Mill - Gray McMullin	56.70	59.59	58.15
13	Marilyn Chadwick - Toni Sharp	60.48	53.06	56.77	13	Stephen Mendick - Bernard Waters	54.46	61.24	57.85
14	Michael Ware - Nick Jacob	52.62	60.88	56.75	14	Jan Cormack - Kathryn Yule	60.49	54.99	57.74
15	Andrew Peake - Liz Adams	55.29	57.74	56.52	15	Nicoleta Giura - Nick Hughes	58.59	56.47	57.54
16	Sue Ingham - Michael Courtney	57.91	54.97	56.44	16	Sascha Wernle - Jovi Smederevac	54.92	59.93	57.43
17	Steve Boughey - Andi Boughey	59.86	52.92	56.39	17	Chen Ding - Herman Yuan	56.99	57.57	57.28
18	Sandra Calvert - Colin Carryer	62.59	49.87	56.23	18	Peter Livesey - Peter Gill	58.91	55.35	57.13
19	Judy Mott - Avril Zets	55.39	55.93	55.66	19	Tony Nunn - Mathew Vadas	54.98	58.20	56.59
20	Kim Frazer - Jamie Ebery	57.56	53.06	55.31	20	Jenny Millington - Barry Jones	63.30	49.68	56.49
21	Therese Demarco - Fraser Rew	53.49	57.11	55.30	21	Hugh Mcalister - Diana Mcalister	48.66	64.00	56.33
22	Murat Genc - Arlene Schwartz	56.26	54.22	55.25	22	Marianne Bookallil - Jodi Tutty	49.93	62.65	56.29
23	Jane Beeby - Michael Wilkinson	59.66	50.08	54.87	23	Martin Bloom - Nigel Rosendorff	55.86	56.19	56.03
24	Edward Levy - Liz Sylvester	53.38	56.19	54.79	24	Michael Prescott - Marlene Watts	60.30	51.71	56.01
25	Julian Foster - David Weston	50.87	57.85	54.36	25	Duncan Badley - Paula Boughey	52.94	58.95	55.95
26	Will Adler - John Luoni	55.30	53.24	54.27	26	Lynne Geursen - Richard Solomon	45.64	64.87	55.26
27	Lindsey Robinson - Chris Fernando	51.98	56.29	54.14	27	Paul Mcgrath - Wayne Smith	58.78	51.69	55.24
28	Normand Maclaurin - Ken Berry	49.11	58.98	54.05	28	Pauline Gumby - Warren Lazer	55.65	54.17	54.91

INTERMEDIATE PAIRS SCORES AFTER QUALIFYING - Leading Scores

	N/S 1-14 Final 15-28 Plate	S1	S2	Avg		E/W 1-14 Final 15-28 Plate	S1	S2	Avg
1	Nicky Bowers - Joy Watkinson	63.74	58.69	61.21	1	Abigail Wanigaratne - Andrew Gosney	58.52	56.33	57.43
2	Charles McMahon - John McMahon	55.66	65.22	60.44	2	Gwyneira Brahma - Vicki Taylor	58.15	55.86	57.01
3	Ian Bailey - Peter Robinson	52.86	64.61	58.74	3	Barbara Power - William Van Bakel	55.29	56.77	56.03
4	Shirley Bettman - Hannah Fuzi	54.98	60.03	57.51	4	Camilla Boyd - Annie Pilcher	56.40	55.49	55.95
5	Birgitt Bingham - Sue Robinson	57.37	56.43	56.90	5	John Aquino - John McMullan	52.59	57.81	55.20
6	Judith Oxley - Lynne Cooke	52.49	58.52	55.51	6	Chris Depasquale - Ross Davis	52.66	57.27	54.97
7	Kay Leeton - Jenny Hoff	56.36	53.94	55.15	7	Denise O'Regan - Kay Webber	51.62	57.44	54.53
8	Nigel Cleminson - Hugh Gehrmann	49.43	60.37	54.90	8	Adrian Riepsamen - Jeff Lassman	56.70	51.92	54.31
9	Chris Larter - John Lahey	55.82	53.94	54.88	9	Evelyne Mander - Joan Jenkins	62.73	45.86	54.30
10	Carol Joseph - Richard Stuart	53.57	56.03	54.80	10	Wayne Carroll - Fran Carroll	57.14	50.30	53.72
11	Barbara Kent - Margie Knox	53.74	55.76	54.75	11	Robyn Stanhope - Pauline Lane	54.81	52.05	53.44
12	David Johnson - John Watson	55.86	52.42	54.14	12	Tessa Rohald - Leonard Rapeport	51.55	54.41	52.98
13	Janice Coventry - Margaret Glover	52.69	55.45	54.08	13	Sandy Greenwood - Anne Clarke	57.07	48.75	52.91
14	Mark Doust - Belinda Taranto	52.79	55.05	53.93	14	Tom Burton - Richard Gibson	52.96	52.56	52.76

15	Sheila Wills - Robin Steinhardt	54.85	52.02	53.44	15	Chris Fraser - Graham Carson	61.52	43.64	52.58
16	Kevin Willcocks - Julie Willcocks	54.51	52.12	53.32	16	Lalita Kanetkar - Deborah Guthrie	54.04	50.94	52.49
17	Max Paterson - Colin Dempster	53.10	52.56	52.83	17	Judy Maccioni - Annthea Matheson	50.27	54.68	52.48
18	Alex Penklis - Phillip Halloran	55.69	49.49	52.60	18	Deborah Mclay - Ian Michelson	42.73	61.14	51.94
19	Linda Norman - Wendy Gibson	53.74	51.11	52.43	18	Rosalyn Stevens - Penny Johnson	49.70	54.18	51.94
20	Elaine Jonsberg - Lynne Henley	52.36	52.02	52.19	20	Janet King - Linda Watson	59.80	43.77	51.79
21	Martin Broome - Valerie Broome	51.85	51.38	51.62	21	Neil Williams - Peter Fitzmaurice	51.21	51.85	51.53
22	Margaret Robertson - Don Robertson	52.36	50.57	51.47	22	James Williamson - Janelle Williamson	48.35	54.24	51.30
23	Allan Pike - Robin Devries	60.98	41.21	51.10	23	David Scott - Caroline Collie	56.30	46.03	51.16
24	Gabrielle Elich - David Christian	42.83	59.29	51.06	24	Rick Gryg - Michael Byrne	50.77	51.48	51.13
25	Chris Nettle - Michael Ward	51.89	49.97	50.93	24	Austin Driscoll - Matt Raj Mal	50.74	51.52	51.13
26	Denise Hartwig - Mavis Simpson	47.07	53.50	50.29	26	Glenda Parmenter - Barbara O'Shea	61.28	40.81	51.05
27	Kevin Dean - Paul Brake	53.03	47.47	50.26	27	Terry Driver - Katrina Hewings	55.66	45.35	50.51
28	Helen Kite - Helen Rollond	50.98	49.16	50.07	28	Gwen Wiles - Lynne Milne	48.01	52.96	50.49

RESTRICTED PAIRS SCORES AFTER QUALIFYING - Leading Scores

N/S 1-14 Final 15-28 Plate		S1	S2	Avg	E/W 1-14 Final 15-28 Plate		S1	S2	Avg
1	Suzette Mcilroy - Dave Tocker	61.84	58.17	60.01	1	Elaine Crommelin - Barbara White	67.11	57.56	62.33
2	Suzanne Goldberg - Steven Goldberg	60.73	55.96	58.35	2	Christine Newbery - Annette Scott	58.42	63.19	60.81
3	Pam Whitehead - Stuart Grant	58.50	57.77	58.14	3	Diane Russell - Maureen Russ	57.23	62.90	60.06
4	Jenni Borren - Margaret Robbie	59.41	56.56	57.99	4	Adrienne Dale - Miriam Lewin	57.20	62.81	60.01
5	Sally Irwin - Sonia Roulston	52.96	61.34	57.16	5	Diana Saul - Douglas Harrah	57.26	61.36	59.32
6	Jane Jordan - Marge Scott	59.07	54.50	56.79	6	Gary Snow - Paul Ehrlich	61.98	53.69	57.84
7	Hattie Curtis - Alan Mace	62.90	49.56	56.23	7	Susan Lipton - Tony Georgeson	64.26	49.72	56.99
8	Nick Edginton - Rhonda Graham	62.30	49.99	56.15	8	Ray Hurst - Heidi Colenbrander	51.89	61.43	56.66
9	Rick Gaylard - Catherine Ng	58.70	53.51	56.11	9	John Dobies - Julie Mansfield	60.60	51.17	55.89
10	Sue Martin - Sue Falkingham	58.36	53.51	55.94	10	Martin Coote - James Harvey	55.95	55.70	55.83
11	Barry Feyder - Robbie Feyder	60.82	50.68	55.75	11	Stephen Miller - Bill Forbes	51.53	59.58	55.56
12	Tim Rigter - Rochelle Van Heuven	61.12	50.05	55.58	12	Sandra Mulcahy - Fiona Hosier	52.56	57.19	54.88
13	Wendy Mcentegart - Nicolette Bartoli	49.00	61.92	55.47	13	David Hollands - Robert Jacobs	43.70	65.90	54.80
14	Anthony Abbott - Neil Williams	46.68	63.33	55.01	14	Steve Colling - Mary Colling	53.86	54.45	54.15
15	Kaye Mccredie - Yvonne Helps	59.02	49.22	54.12	15	Rosemary Jackson - Takayo Yanagisawa	53.19	54.89	54.05
16	Pauline Coulter - David Coulter	52.35	55.00	53.68	16	Nick Walsh - George Wagner	56.27	51.72	54.00
17	Helen Andrews - Leah Andrews	52.55	53.85	53.20	17	Jane O'Brien - Julian Herbert	53.03	54.23	53.63
18	Gary Gibbards - Debbie Gibbards	56.04	50.15	53.10	18	Glenda Sayers - Daniela Shannon	46.14	61.11	53.63
19	Anthony Marsland - Helen Blair	54.49	51.68	53.09	19	Philip Roberts - Di Hodges	50.03	57.15	53.59
20	Christine Bartlett - Kerry Bartlett	52.97	52.22	52.59	20	Peter Gruythuysen - Margaret Jennings	64.53	42.40	53.47
21	Peter Muller - Glenys Tipler	52.75	52.36	52.56	21	Suzanne Cole - Delores Graves	56.27	50.62	53.44
22	Maryanne Bird - Godfrey Baillon-Bending	51.51	53.45	52.48	22	Charmaine Hanbury-Webber - Teri Sonal	52.29	54.47	53.38
23	Judy Zeller - Judith Bell	43.67	60.95	52.31	23	Gary Petterson - Laurie Bell	56.91	48.68	52.80
24	Line Davidson - Sam York	51.29	52.82	52.06	24	Sumant Handa - Eugene Pereira	52.08	53.32	52.70
25	Cheryl Waters - Marie Pickering	51.92	52.11	52.02	25	Rosemary Thomson - Frances Dunn	54.34	50.89	52.62
26	Anna Chappell - Marilyn Kennedy	52.82	51.05	51.94	26	Jan Cluff - Neil Waters	48.77	56.16	52.47
27	Ruth Poutakidis - Lyn Mayer	52.02	51.81	51.91	27	Simon Van Kruistum - Cobie Van Kruistum	57.11	47.80	52.46
28	Wendy Rissler - Jenny Coyle	52.97	50.33	51.65	28	Daria Williams - Ian Cameron	60.22	44.63	52.43

NOVICE PAIRS SCORES AFTER QUALIFYING - Leading Scores

	N/S 1-14 Final 15-28 Plate	S1	S2	Avg		E/W 1-14 Final 15-28 Plate	S1	S2	Avg
1	Yvonne Wang - Tomoko Nakamatsu	50.95	67.74	59.34	1	Tony White - Mary Poynten	59.32	59.98	59.65
2	Paul Smith - Sa Smith	58.64	59.51	59.08	2	Christine Walker - Gill Minson	56.44	62.11	59.28
3	Deirdre Doepel - Jennifer Sharpe	56.13	57.48	56.81	3	Vesna Markovic - Voyko Markovic	57.90	59.08	58.49
4	Wendy Casey - Barbara Moni	55.12	57.83	56.48	4	James Parker - Warwick Wilkins	59.34	56.94	58.14
5	Debbie Kennedy - Jennifer Clarebrough	56.21	54.45	55.33	5	Juliet Dunworth - Maria Page	55.97	59.79	57.89
6	Frank Ajzensztat - Michelle Ajzensztat	52.56	53.92	53.24	6	Sameer Pandya - Kathleen Clifford	61.70	52.72	57.22
7	Gwen Riordan - Kevin Riordan	52.14	54.13	53.14	7	Michelle Rubin - Lauren Ehrlich	52.62	61.18	56.90
8	Margaret Cummins - DeeJay East	51.99	53.92	52.95	8	Kathy Duke - David Duke	49.36	61.93	55.65
9	Peter Allingham - Paddy Taylor	47.10	58.73	52.92	9	John Wilson - Geoff Willson	50.91	57.55	54.23
10	Elinor McCloskey - Maggie Gibbs	54.23	51.00	52.62	10	Sebastian Langdon Macmillan - William Han	60.10	48.29	54.20
11	Colin Kleinig - Jane Stephens	50.47	54.34	52.41	11	Sandy Boyd - Shannon Queree	53.65	54.17	53.91
12	Lesley Sutherland - Lindell Day	55.96	48.29	52.13	12	Colin Speller - Jodie Gudaitis	55.60	51.60	53.61
13	Judy Hefferan - Robyn Brazier	50.59	53.49	52.04	13	Christine Dunlop - Roseanne Humphreys	60.19	47.00	53.60
14	Jan Powell - Jenny Mcmillan	45.97	57.94	51.96	14	Rick Webster - Robert Olander	46.67	59.83	53.25
15	Maeve Doyle - Sylvia Halloran	50.59	53.06	51.83	15	Janelle Crawley - Noreen Thompson	54.94	51.46	53.20
16	Kerry Flanagan - Kate Ward	51.25	52.39	51.82	16	Jamshid Vazirzadeh - Hazel Parkins	51.61	54.63	53.12
17	Cathy Mathieson - Deborah Thomas	48.38	55.24	51.81	17	Jenny Muscio - Jacquie Collins	48.65	57.55	53.10
18	Robert Mischlewski - Fred Cole	53.52	50.04	51.78	18	Robyn Chippindall - Jane Whelan	53.03	52.56	52.80
19	Lynda Young - Karen Cassar	56.70	46.08	51.39	19	Jane Hills - Rae Moir	56.05	48.29	52.18
20	Philip Young - Mark Cassar	57.45	45.26	51.36	20	Hans Limacher - Claire Williams	49.64	53.99	51.81
21	Lesley Martin - Eva Borowski	53.57	49.04	51.31	21	Julie Scott - Elizabeth Van Vugt	49.29	53.81	51.55
22	Di Agostino - Eva Pendel	55.28	47.08	51.18	22	John Aldersley - Beryl Lowry	47.46	54.99	51.23
23	Colleen Moule - Paul Nitschmann	48.87	53.21	51.04	23	Andrew Lazar - Annie Rose	47.80	53.24	50.52
24	Yvonne Burns - Debra Prendiville	52.95	48.36	50.66	24	Alexander Zadnik - Megan Zadnik	52.25	48.72	50.48
25	Debra Niesler - Dawn George	52.36	48.47	50.42	25	Tom Lyons - Peter Lyons	48.02	52.36	50.19
26	Rosalie Roosenburg - Alison Bouris	52.29	48.47	50.38	26	David Osmond - Michael Giddings	50.58	49.50	50.04
27	Carol Wright - Teena Haslam	55.16	44.84	50.00	27	Frances Hammond - Ian Hammond	51.85	48.15	50.00
28	Anna Jadach - Ted Mcnamara	47.97	51.92	49.95	28	Jenni Cover - Adrienne Butler	48.79	51.18	49.98

Weekend Matchpoint Swiss Pairs (After 3 of 9 Rounds) - Open

Rank	Pair	Names	Total	Rank	Pair	Names	Total
1	11	Richard Ward - Therese Tully	57.14	76	79	Sylvia Foster - Jaan Oitmaa	31.38
2	19	Genevieve Page - Phil Gue	51.28	77	1	Avinash Kanetkar - David Beauchamp	30.94
3	20	Lynn Kalmin - Lorna Ichilcik	50.32	78	23	Glenis Palmer - Christine Wilson	30.49
4	12	Jane Lennon - Alan Grant	47.94	79	99	Mark Guthrie - Julie Guthrie	30.26
5	8	Trevor Fuller - Gerry Daly	47.75	80	107	Max Robb - Pam Tibble	30.11
6	13	Colin Baker - Ann Baker	47.06	81	75	Les Bonnick - Audrey Bonnick	30.06
7	28	Andrew Tarbutt - Alister Stuck	45.91	82	136	Pam Hancox - Phil Merchant	30.05
8	96	Bill Humphrey - Paul Carson	45.77	83	33	Jennifer Rothwell - Phaik Yao	30.02
9	46	Liz Fanos - Julianne Rocks	45.75	84	45	Len Meyer - Phyllis Moritz	29.92
10	90	Fay Stanton - Anne Young	44.77	85	83	Peter Nilsson - Laurie Skeate	29.26
11	82	Giza Fletcher - Joe Barda	44.38	86	84	Gregory Gosney - Margaret Plunkett	28.86
12	69	Pamela Evans - James Evans	44.26	87	142	Jenny Carr - Kelvin Tibble	28.17
13	6	Michael Pemberton - Chris Ackerley	44.23	88	51	Monica Darley - Kath Poole	27.99
14	42	Larry Moses - John Gough	43.96	89	25	Tony Treloar - Yolanda Carter	27.81
15	10	Ross Crichton - Pam Crichton	43.86	90	146	Greg Buzzard - Harry Shepherd	27.54

16	128	Sarah Green - Lyn Muller	43.35	91	26	Tereska Knap - Janine Budgeon	27.30
17	16	John Brockwell - Kevin Tant	42.11	92	133	Noel Woodhall - Claire Woodhall	27.28
18	32	Prudie Wagner - Felicity Gunner	41.29	93	145	Tracey Lewis - Anna Kalma	27.09
19	7	Helena Dawson - Richard Douglas	40.73	94	43	Theo Mangos - Leigh Foran	27.06
20	114	Loraine King - Helen Standfast	40.65	95	141	Naomi Hannah-Brown - Priscilla Bloy	26.95
21	44	Ken Dawson - Andrew Slater	40.36	96	70	Mary Waterhouse - Gizella Mickevics	26.43
22	52	Lester Kalmin - Mannie Ichilcik	40.10	96	108	Joanna Tennyson - Debbie James	26.43
23	4	Linda Cartner - Jonathan Westoby	39.97	98	103	Cheryl Stone - Robyn Clark	26.29
24	40	George Finikiotis - Margaret Klassen	39.73	99	59	Connie Schoutrop - Bronwyn Macleod	26.25
25	18	Anthony Burke - George Fleischer	39.11	100	64	Gary Lynn - Anne Riley	25.51
26	50	Brian Thorp - Andrew Struik	38.82	101	119	Tere Wotherspoon - Charles Page	25.50
27	53	Rick Rhodes - Maura Rhodes	38.52	102	121	Pepe Schwegler - Peter Hill	25.19
28	147	Bruce Inglis - Peter Hensman	38.18	103	127	Rosemary Matskows - Wayne Gyde	24.87
29	61	Jim Martin - Lyn Martin	37.97	104	73	Ian Plummer - Margaret Owen	24.84
30	24	Charles Howard - Kerry Wood	37.77	105	120	Helen Rial - Patricia Bruce	24.62
31	54	Peter Busch - Adrienne Kelly	37.32	106	67	Jeanette Abrams - Linda Aubusson	24.51
32	63	Adel Abdelhamid - Anne Harris	37.29	107	93	Julie Boyce - Christine Thomas	24.40
33	30	Arie Geursen - Trevor Robb	37.03	108	38	Lois Steinwedel - Kathy Johnson	24.33
34	58	Leigh Owens - Jan Smith	36.64	109	86	Jacqui Morton - Jenny Date	24.23
35	47	Frank Kovacs - Steven White	36.49	110	89	Colin Shugg - Chris Scott	23.83
36	149	Susan Rowe - Brian Craig	36.20	111	109	Susan Cullen - Linden Raymond	23.49
37	5	Neville Francis - Magnus Moren	35.87	112	139	Harold Orsborn - Margaret Orsborn	23.29
38	91	Hamid Sadigh - Denise Barnes	35.79	113	117	Brian Borrell - Peter Lloyd	23.27
39	14	Andrew Richman - Sandra Richman	35.54	114	105	Sharmini Anderson - Hazel O'dea	22.94
40	134	Gayle Webb - Colin Webb	35.23	115	110	Eric Baker - Gerald Dawson	22.84
41	35	Jenny Hay - Ralph Parker	35.08	116	27	Bas Bolt - John Kelly	22.52
42	2	Shane Harrison - Stephen Williams	34.99	117	106	Pamela Lidl - Rudi Lidl	22.51
43	72	Geoffrey Toon - Jim Wood	34.97	118	76	Trish Thatcher - Amber Noonan	22.50
44	137	Gillian Gonthier - Reeve Pring	34.94	119	60	Kaye Hart - Jeff Carberry	22.30
45	135	Alan Geare - Deborah Cooper	34.92	120	36	Dianne Marler - Jane Davies	22.27
46	17	Niek Van Vucht - Graham Wakefield	34.91	121	143	Barbara Gordon - Lynn Hall	21.35
47	88	Christine Jenkins - Jenny Skinner	34.90	122	29	Anne Lamport - Cathryn Collins	21.18
48	148	Bill Peters - Evol Cresswell	34.86	123	124	Kathy Marchant - Denise Rogers	21.02
49	62	Frank Vearing - Greg Nicholson	34.53	124	94	David O'gorman - Julie Jeffries	20.55
50	9	Sue Lusk - Viv Wood	34.47	125	21	Ian Afflick - Paul Collins	20.25
51	41	Roger Weathered - Lou Tillotson	34.42	126	150	Peter Cox - Patrick Bugler	20.09
52	87	Lorraine Zoia - June Herbert	34.40	127	80	Sue Allen - Anne Bates	20.08
53	78	Kelela Allen - Susan Capp	34.22	128	113	Sue Cooper - Joan Young	19.99
54	3	Roger Thomas - Paul Tyminski	34.20	129	102	Lorraine Carr - Robert Sutton	19.84
55	48	Helen Mclauchlan - Richard Mclauchlan	34.19	130	81	Nikki Riszko - Ashok Tulpule	19.67
56	130	Sue Spencer - Bev Guilford	34.15	131	111	Wendy Webster - Moira Smith	19.00
57	31	Barry Palmer - Neil Stuckey	34.01	132	115	Adam Hertelendy - Peter Coppin	18.21
58	66	Michael Stoneman - Val Roland	33.93	133	85	Pat Pepper - Susan McMahon	17.51
59	116	Rod Binsted - Judy Scholfield	33.89	134	100	Meg Sharp - Helen Clayton	16.50
60	74	Lindsay Young - Denise Donald	33.30	135	131	Patricia Scott - Sharon Jackson	16.03
61	97	Phil Pollett - Annette Corkhill	33.27	136	57	Errol Miller - Dorothy Gehrke	15.67
62	55	Sally Murray-White - Geoff Whiting	33.02	137	112	Tony Davidson - Noreen Weyling	15.55
63	98	Ken Moffitt - Sue Moffitt	32.94	138	122	Margaret Kyburz - Patricia McDonald	15.53
64	126	Catherine Chaffey - Colin Clifford	32.63	139	71	Jan Clyne - Denise Keenan	15.21

65	77	Ron Millet - Lesley Millet	32.60	140	138	Sue Brown - Robert Brown	15.18
66	34	Siegfried Konig - Nadya Tuxworth	32.58	141	104	Brian Leach - Carolyn Leach	15.15
67	22	Julia Hoffman - Noelene Law	32.41	142	125	Lalita Singh - Margaret Reid	14.15
68	49	Sue O'brien - Terry O'dempsey	32.32	143	56	Ross Steinwedel - Erin Waterhouse	13.97
69	144	Mairi Fitzsimons - Brian Fitzsimons	32.11	144	118	Leo Sim - Anne Sim	13.45
70	95	John Tredrea - Ched Twyman	31.99	145	92	Jim Thatcher - Carolyn Seymour	10.51
71	123	Josephina Burrie - Dianne Rigano	31.94	146	129	Sandra Berns - Dov Berns	8.61
72	37	Linda Alexander - Angela Norris	31.76	147	132	Glenys Dean - Ken Carmichael	8.38
73	68	Alan Hamilton - June Glenn	31.60	148	140	Peter Watson - Julia Watson	8.08
74	65	Ingrid Cooke - Susan Phillips	31.55	149	101	Liz Robertson - Delsi Pozza	7.91
75	15	Joan Butts - Tom Wykoff	31.45	150	39	Tom Strong - Edda Strong	7.79

Weekend Matchpoint Swiss Pairs (After 3 of 9 Rounds) - 0-500

Rank	Pair	Names	Total	Rank	Pair	Names	Total
1	54	Karen Smith - Sue Cohen	50.31	33	53	Ruth Brucker - Dorothy Mackay	30.06
2	29	Judith Leathley - Cathy Clarke	49.79	34	3	Siamak Parsanejad - Peter Barnes	29.63
3	13	Ashok Chotai - Barry Williams	46.46	35	31	Peter Ramsey - Gillian Ramsey	28.16
4	50	Julian Glyn - Pamela Glyn	46.20	36	64	Chris Glyde - Maria Casci	28.05
5	17	Philip Hocking - Cathy Hocking	45.87	37	7	Mick Fawcett - Lyn Tracey	27.65
6	14	Neville Clatworthy - Sherrell Cardinal	45.44	38	59	Graham Westenra - Mary Penington	27.49
7	25	Michael Francis - Terry Dold	42.85	39	12	Kate Balmanno - Glenda Vincent	27.44
8	4	Deanna Stuart - John Stuart	40.75	40	49	Richard Clarke - Ian Greenwood	26.66
9	62	Mariusz Tumilowicz - Barbara Tumilowicz	39.94	41	57	Kevin Birch - Julie Quilty	26.52
10	9	Esther Saunders - Colin Saunders	39.91	42	34	Suzanne Eggins - Jenny Mendick	26.25
11	32	Alan Clague - Jan Acworth	39.56	43	27	Margaret Stevens - Sue Luby	25.71
12	10	Joan Leckie - Margaret Williamson	37.94	44	43	Suzi Ledger - Frank Spurway	25.47
13	37	Alan Bustany - Pauline Caust	37.48	45	11	Philip Houlton - Bambi Houlton	24.46
14	44	Rodney Macey - David Spencer	37.01	46	36	Misako James - Geraldine Scholtz	24.05
15	39	Lynn Bain - Mardi Hogarth	36.91	47	22	Cherry Trengove - Margaret Rex	23.89
16	33	Leigh Carroll - Kerry Mills	36.86	48	26	Megan Sutherland - Warren Mcelroy	23.36
17	60	Peter Farley - Doug Galyer	36.44	49	2	Kay Baguley - Bruce Baguley	22.39
18	20	Robert Stick - Colin Payne	36.38	50	63	John Mcdonald - Yvette Gilroy	21.07
19	6	Jeff Conroy - Jill Blenkey	36.29	51	8	Margaret Land - Rob Ward	20.72
20	35	Murray Wiggins - Tilley Thillainathan	35.28	52	56	Kerrie Fitzmyers - Jonathan Jones	20.65
21	23	Anne Kirkpatrick - Judy Bardone	35.17	53	21	Jo Dundas - Alan Dundas	20.47
22	42	Howard Bridgman - Kerrie Norris	34.94	54	45	Peter George - Jill Short	20.27
23	19	Jenny Crawt - Jane Gryg	33.97	55	47	Kay Dixon - Dawn Benes	19.10
24	58	Barbara Imlach - Annette Martin	32.88	56	15	Peter Karol - Joanne Crockford	18.40
25	41	Sandra Cool - Daniele Escreet	32.86	57	28	Chris Cullen - Sally Cullen	18.19
26	30	Trish Lye - Rhonda Wieckhorst	32.08	58	5	Richard Spelman - Janet Price	16.83
27	40	Russell Woolley - Charlie Georgees	31.97	59	55	Marcelle Goslin - Anne Birt	16.52
28	51	Guy Kalma - Jennifer Finigan	31.84	60	52	Jill Ward - Jean Matthews	15.67
29	18	Kevin Balkin - Pauline Balkin	31.32	61	46	Althea Crowley - Leigh Tindall	15.13
30	24	John Dunlop - Jill Dunlop	30.98	62	38	Barbara Love - Jim Love	15.12
31	1	Neil Raward - Dot Piddington	30.97	63	61	Hanna Majewski - Rita Van Lieshout	13.93
32	16	George Gibson - Lynne Layton	30.40	64	48	Gail Cowen - Lesley Meyer	13.64



Gold Coast Congress 2020 Celebrity Speakers



Located upstairs opposite Administration office
Min \$5 contribution to ABF Youth Bridge (free for Youth)

Sunday

9.30 – 10.15

Joan Butts

Major Suit Raises- a vital decision



Whether you play a partscore, game or slam is often based on responder's decision when showing support for opener's major.

The number of trumps, the shortages, and the overall quality of the hand all impact on the bid responder chooses.

As the Australian Bridge Federation's National Teaching Coordinator, Joan trains teachers, introducing them to the latest methods in bridge education.

Monday – 2 sessions

11.30 -12.15 (for Bobby Richman players)

12.30 – 1.15 (for Monday Butler players)

Andy Hung

***Expert Tips on Opening Leads
(With lead problems that Andy has faced in international tournaments!)***



If you find yourself stressing on Opening Lead dilemmas, come to Andy's talk and he will give some insightful tips! *Andy Hung is a professional bridge player and teacher who has represented Australia at both Youth and Open competitions. He has won several Australian National titles and is once again on the Australian Open team for 2020. He thoroughly enjoys teaching bridge at all levels, and regularly runs bridge holidays.*

Second session is a repeat.

Tuesday

9.30 – 10.15

Laura Ginnan & Pete Hollands

Tricks for not falling into card play traps



If you feel like you are always one trick off the pace you might be making some common card play errors. Come along to find out what they are and clean them out of your game.

Laura Ginnan & Pete Hollands are Melbourne -based professional bridge players and teachers. Pete has represented Australia at the Bermuda Bowl.

Thursday

9.30 – 10.15

William Jenner-O'Shea

Handling Interference After Our 1NT (And Interfering with Theirs)



How to compete to the best contract and bid your games after your 1NT gets overcalled. Will also discusses the most effective ways to interfere with their 1NT and some additional NT responses that you may not already play.

Will Jenner-O'Shea has represented Australia in several bridge events, including the World Mind Sports Games in Beijing in 2008. Will has also built a successful career teaching.

Thursday

2.00-2.45

Kim Frazer







Gaining the mental edge at Bridge



Kim will discuss one of the themes from her newly published book, **Match Pressure**, together with some real-life situations and hands which are featured in the book.

Kim Frazer represented Australia on numerous occasions in target shooting winning numerous Australian titles and other awards. She first represented Australia in Bridge in 2018 as a member of the Australian Women's Team.

CALENDAR OF SOCIAL AND OTHER ACTIVITIES GOLD COAST CONGRESS

Venue		Monday 24th February	Tuesday 25th February	Wednesday 26th February	Thursday 27th February	Friday 28th February
NOVICE AND ROOKIE ACTIVITIES						
Rookies Help Available	In the Playing Area Rookies Section	9:30am to 10:30am				
Under 50MPs Help Available	In the Playing Area Under 50s Section	10am to 10:30am	10am to 10:30am	10am to 10:30am		
Novices Help Available	In the Playing Area Novices Section	10:00 am to 10:30am	10:00am to 10:30am			
SOCIAL AND OTHER ACTIVITIES						
Collection for Zephyr Education Inc. The GCC Official Charity Helping Children affected by Domestic Violence Getting Back to School	Foyer GCCEC Collection boxes and donation slips available					
Fashion Parade With our Guest Models Jill Dunning & Lana Politi	Change Alley Oasis Level 1 Outside Barcode Café	10:30am to 11:30am				
TBIB Daily Prize Wheel You Must be Present to Win. A TBIB lucky star under a chair in main playing area for a spin opportunity	Foyer GCCEC					
Trivia Night Hosted by Tony Treloar Teams to a Maximum of 8 Participants	Beachside Pavilion Beach End Oasis Shopping Centre	Entries in by 1:30pm Trivia to start at 6pm				
Directors Get Together Hosted by Jan Peach	Upstairs Room 10	8:30am				
Parade Entrants Feathers and Fauna Theme	Foyer GCCEC	2:30pm to 2:45pm				
Champagne Breakfast For Shoe Shoppers In Her Shoes	In Her Shoes Ground Floor Oasis Shopping Centre	 local & imported shoes · bags · accessories				8:15am
BRIDGE 'WIDOWS' ACTIVITIES						
Get Together Non-Bridge Playing Partners	Apartment 3204 Air on Broadbeach	10:30am to 11:00am				
Following Get Together Above Hosted Expedition Mt Tambourine and Skywalk Cost \$20 p.p. for return bus	Depart Apartment 3204 & Grnd Floor Lobby Air on Broadbeach		Depart 11:00am Return Appr 4:30pm			
Unhosted Excursion Currumbin Wildlife Sanctuary Cost \$10 p.p. for return bus	Depart Ground Floor Air on Broadbeach		Depart 11am Pickup 4:30pm			
Hosted Bridge Widows Expedition Byron Bay Cost \$20.00 p.p. for return bus	Depart Ground Floor Air on Broadbeach		Depart 10:45am return 4:30pm			
Sanctuary Cove Lunch	Depart Ground Floor Air on Broadbeach					Depart 11am return 4:30pm
All Golf Enquiries to Ian Wright 0417194347 • ian83@me.com		Monday 24th February	Tuesday 25th February	Wednesday 26th February	Thursday 27th February	Friday 28th February

GOLD COAST CONGRESS 2020

	Sunday 23rd February	Monday 24th February	Tuesday 25th February	Wednesday 26th February	Thursday 27th February	Friday 28th February	Saturday 29th February
OPEN EVENTS							
Open Pairs Championship	10:30am F1/3 3:00pm F2/3	1:30pm F3/3				O/F Teams S/F Teams 9:00am 2:00pm 2x12 Brds 3x12 Brds	Finals Teams 9:00am 4x12 Brds
Open Teams (**incl. Women's and Seniors')			10:30am Start 4 x 14 Brds R1-R4	10:30am Start 4 x 14 Brds R5-R8	10:30am Start 4 x 14 Brds R9-R12		
Weekend Matchpoint Swiss Pairs	10:30am 2/3 3:00pm 3/3	9:30am 1/2 1:30pm 2/2					
Monday Butler Swiss Pairs							
Ivy Dahler Open Butler Swiss Pairs							
Seres/McMahon Matchpoint Swiss Pairs							
WOMEN'S and SENIORS EVENTS							
** Seniors Teams Final (top 2 from Open after Match 12)						10:00am Start 4x12 Brds Final	
** Women's Teams Final (top 2 from Open after Match 12)						10:00am Start 4x12 Brds Final	
INTERMEDIATE EVENTS (Under 750MPs)							
Intermediate Pairs Championship	10:30am F1/3 3:00pm F2/3	1:30pm F3/3	10:30am Start 4 x 14 Brds R1-R4	10:30am Start 4 x 14 Brds R5-R8	10:30am Start 4 x 14 Brds R9-R12	10:00am Start 4x12 Brds Final	
Intermediate Teams							
Ivy Dahler Intermediate Butler Swiss Pairs							
RESTRICTED EVENTS (Under 300MPs)							
Restricted Pairs Championship	10:30am F1/3 3:00pm F2/3	1:30pm F3/3	10:30am Start 4 x 14 Brds R1-R4	10:30am Start 4 x 14 Brds R5-R8	10:30am Start 4 x 14 Brds R9-R12	10:00am Start 4x12 Brds Final	
Restricted Teams							
Ivy Dahler Restricted Butler Swiss Pairs							
NOVICE EVENTS (Under 100MPs)							
Novice Pairs Championship	10:30am F1/3 3:00pm F2/3	1:30pm F3/3	10:30am Start 4 x 14 Brds R1-R4	10:30am Start 4 x 14 Brds R5-R8	10:30am Start 4 x 14 Brds R9-R12	10:00am Start 4x12 Brds Final	
Novice Teams							
Friday Novice Pairs							
0-500MP EVENTS							
Weekend Matchpoint Swiss Pairs U500	10:30am 2/3 3:00pm 3/3	9:30am 1/2 1:30pm 2/2					
Monday Butler Swiss Pairs U500							
ROOKIE PAIRS (Under 10MPs)							
Rookie Pairs - Single Session Events	10:30am 1/1				10:30am 1/1		
0-50MP PAIRS							
0-50 Masterpoint Pairs			10:30am 1/1	10:30am 1/2 3:00pm 2/2	10:30am 1/2 3:00pm 2/2		
WALK-IN PAIRS							
Walk-in Pairs (No Frills only on Friday 21st Feb)	3:00pm	9:30am 1:30pm	10:30am 3:00pm	10:30am 3:00pm	10:30am 3:00pm	10:00am 2:00pm	10:00am
	Sunday 23rd	Monday 24th	Tuesday 25th	Wednesday 26th	Thursday 27th	Friday 28th	Saturday 29th

**Dinner
Dance
7:00pm
for
Drinks**

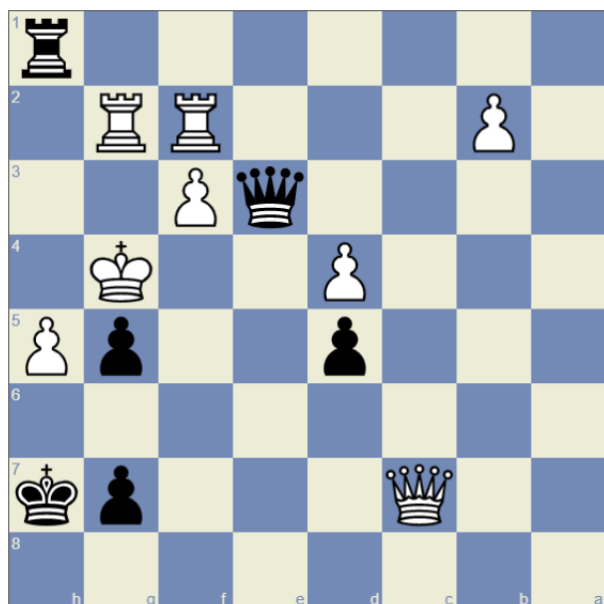
**7:30pm
Start**

**Bookings
Essential**

A popular climax to the week.
Attendees will be invited to register for this event during the week. The cost will be \$20 to anyone who played in an event (walk-ins not included) and \$50 otherwise.

SOLUTION TO YESTERDAY'S CHESS PROBLEM

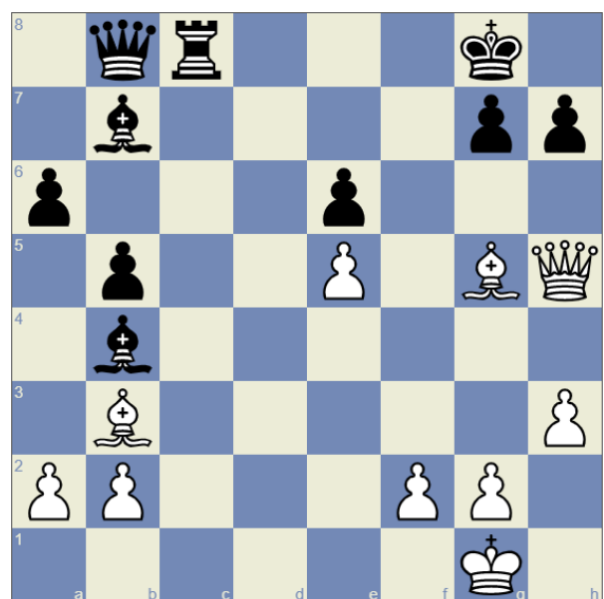
SOLUTION TO YESTERDAY'S SUDOKU [MEDIUM]



1. Qe6+ Kxg5 2. Qf6+ Kg4 3. Rh4+ Kg3 4. Qg5#

7	6	3	1	8	9	5	4	2
5	4	1	2	6	7	8	9	3
9	2	8	5	3	4	6	7	1
8	7	6	3	5	2	9	1	4
1	3	9	7	4	8	2	6	5
4	5	2	9	1	6	3	8	7
6	1	7	8	2	5	4	3	9
3	8	5	4	9	1	7	2	6
2	9	4	6	7	3	1	5	8

TODAY'S CHESS PROBLEM



White to move and win

Solutions in the next bulletin issue

TODAY'S SUDOKU [Hard]

9		6	4					1
	8			9		7		
		3	2					
	3	5	8					
7								9
					6	1	7	
					5	8		
		2		1			6	
8					4	5		7



Let the bidding battle begin !

NZ NATIONAL BRIDGE CONGRESS

26TH SEPT – 3RD OCT, 2020

Registration preferred by 31st August, 2020

Go to the NZB Website for details of all events

www.nzbridge.co.nz

Venue

Distinction Hotel, Hamilton NZ

Rooms (including breakfast) from \$155



DISTINCTION HAMILTON

• HOTEL & CONFERENCE CENTRE •



NZBridge

New Zealand's Premier Bridge Event

Something for all Grades

Open

Restricted

Intermediate /Junior

Seniors (62+)

1 Novice event

Full Congress

only NZ\$410

single events and smaller packages available

Overseas players most welcome

General enquiries
Request a partner
or teammates

Contact
Richard Solomon

richard.solomon@nzbridge.co.nz
Phone: +64 9 2328494



Monday Night 24TH February FROM 6:00pm

This year the Trivia night will be held again at

BEACHSIDE PAVILION BROADBEACH

(Beach end, The Oasis, Victoria Ave, Broadbeach)

**A big welcome to our hosts:
Dominique and Tony Treloar**

Food commencing 6:00pm for a start of Trivia at 6:30pm

Expected finishing time between 8:45pm and 9:15pm

The bridge menu is below, and we hope all players will avail themselves of these specials and arrive before 6pm to give time to order their meal and drinks ready to start play at 6.30pm.

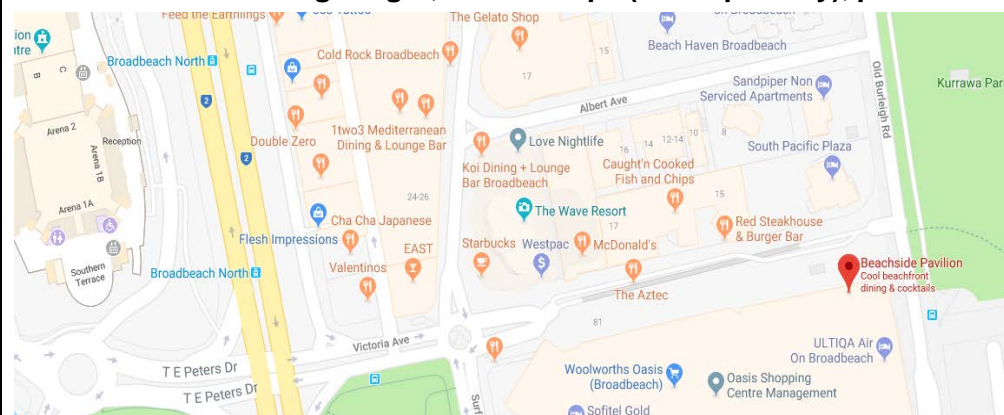
There will be a fee of \$10.00 per player with all proceeds going to Friends of Youth Bridge Fund to specifically be used to facilitate youth attendance at the Gold Coast Congress with the objective of having apartments for the week where youth players can stay for free or minimal (+/- \$10) charge.

Tables are made up of eight sittings, we will upon payment be allocating a table number. All individual/team registrations must be paid in full at the **Bridge Administration desk at the GCCC before Monday 1:30pm**, later entries at the organiser's discretion.

The members of the top three winning teams will receive prizes and other random prizes are available.

\$25 Trivia Menu Selection will be available

Pavilion will be offering burger, Fish & Chips (their specialty), pasta and salad options for vegetarians



**USE OF
ELECTRONIC DEVICES
OF ANY TYPE
STRICTLY PROHIBITED
OFFENDER AND THEIR
TEAM WILL BE LIABLE
TO DISQUALIFICATION**